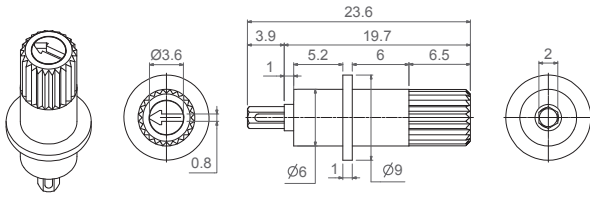
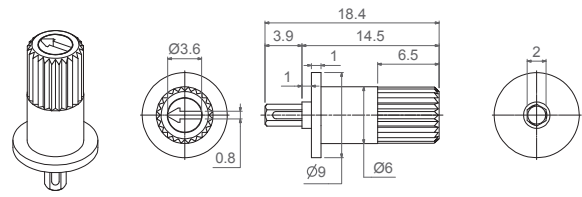


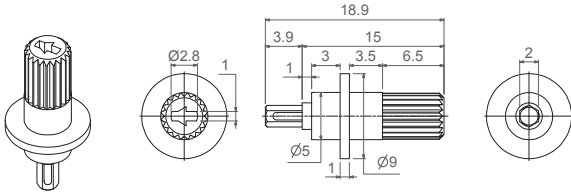
9006



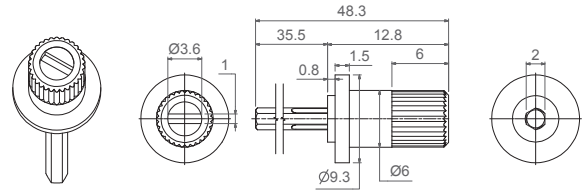
9009



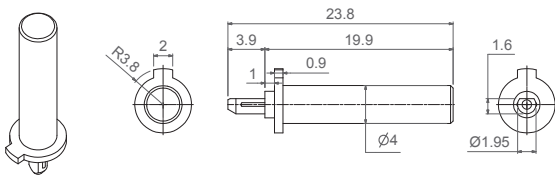
9010



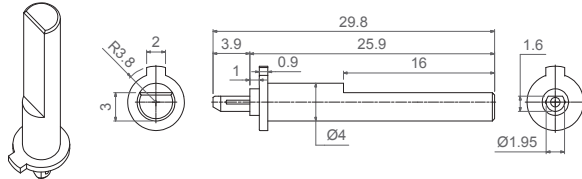
9018 (for 6 ganged potentiometers)



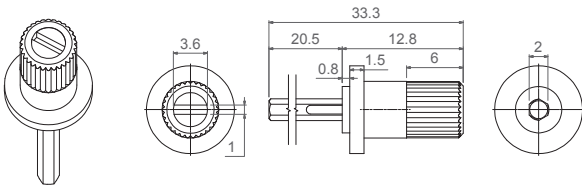
9019 (Designed for D rotor)



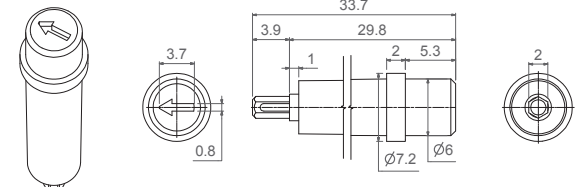
9020 (Designed for D rotor)



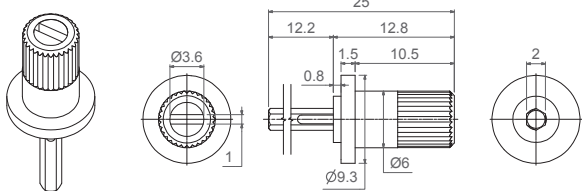
9039 (for 4 ganged potentiometers)



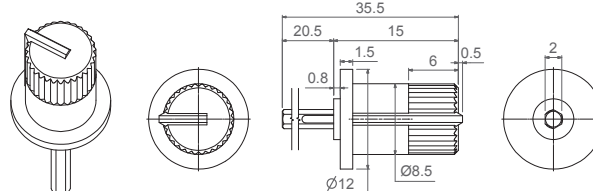
9047



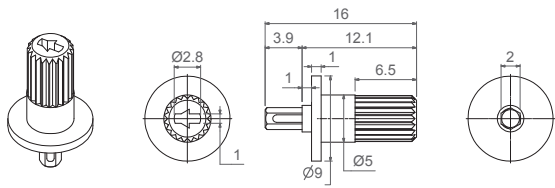
9048 (for 2 ganged potentiometers)



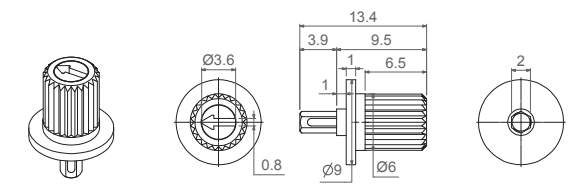
9051 (for 4 ganged potentiometers)



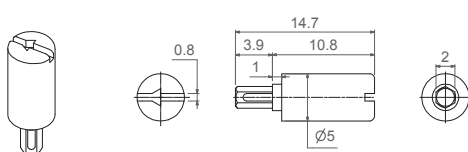
9053



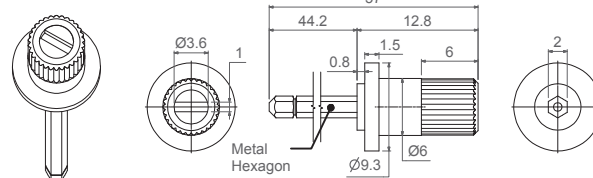
9054



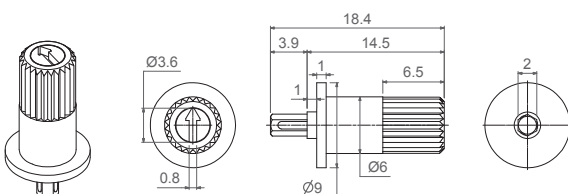
9055



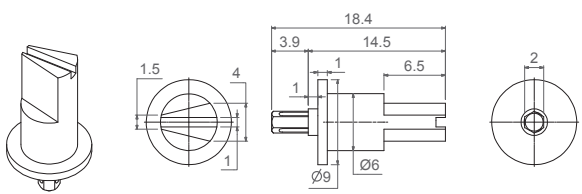
9056 (for 8 ganged potentiometers)



9059



9063



The arrow is in line with the wiper when potentiometer has rotor J (with M rotor, there is a 30° difference).

Specifications on this catalog are for reference only, as they are subject to change without notice.