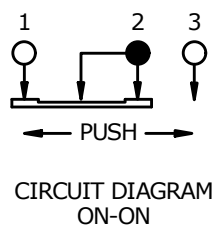


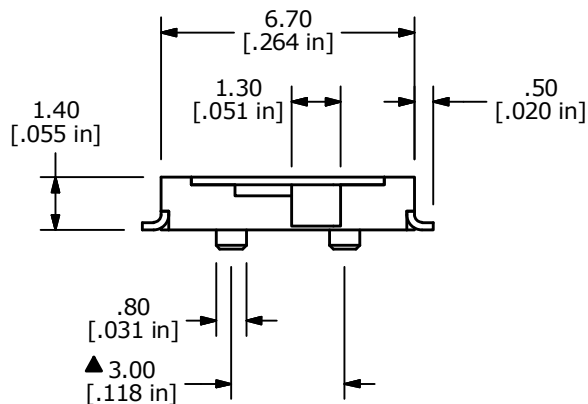
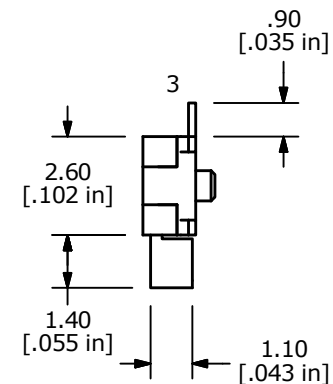
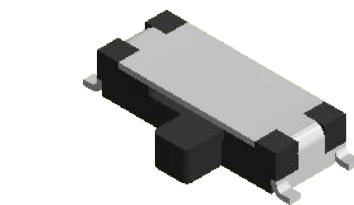
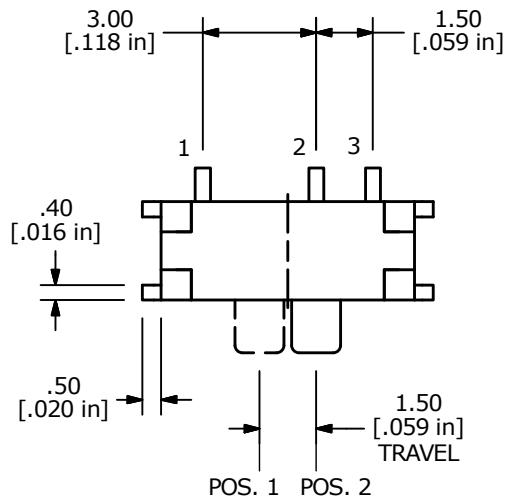
SURFACE MOUNT PCB LAYOUT

FUNCTION	POS. 1	POS. 2
A - SPDT	ON	ON
TERMINAL CLOSURE	1-2	2-3



NOTES:

1. ALL DIMENSIONS IN MM [INCH]
2. TERMINAL NUMBERS FOR REF. ONLY
3. TOLERANCE: X.X=± 0.4  
X.XX=± 0.25
4. RATING: 25mA @ 24VDC
5. TRAVEL: 1.5 ±0.2
6. OPERATING FORCE: 150± 100gF
7. ELECTRICAL LIFE: 10,000 CYCLES MIN.
8. CONTACT RESISTANCE: 70mΩ MAX.
9. INSULATION RESISTANCE: 100MΩ AT 100 VDC
10. DIELECTRIC STRENGTH: 100VAC
11. OPERATING TEMPERATURE: -20°C to +70°C
12. ▲ DENOTES CRITICAL PARAMETER
13. 2011/65/EU (ROHS) COMPLIANT



TITLE EG1215AA

A	23395	NEW RELEASE	6/18/18	MJR
REV	PCR NO	DESCRIPTION	DATE	BY

SCALE	DATE	DR	DWG	REV
5:1	6/18/2018	MJR	N121500	A

THE INFORMATION CONTAINED IN THIS DOCUMENT IS PROPRIETARY TO E-SWITCH AND IS NOT TO BE COPIED OR TRANSFERRED