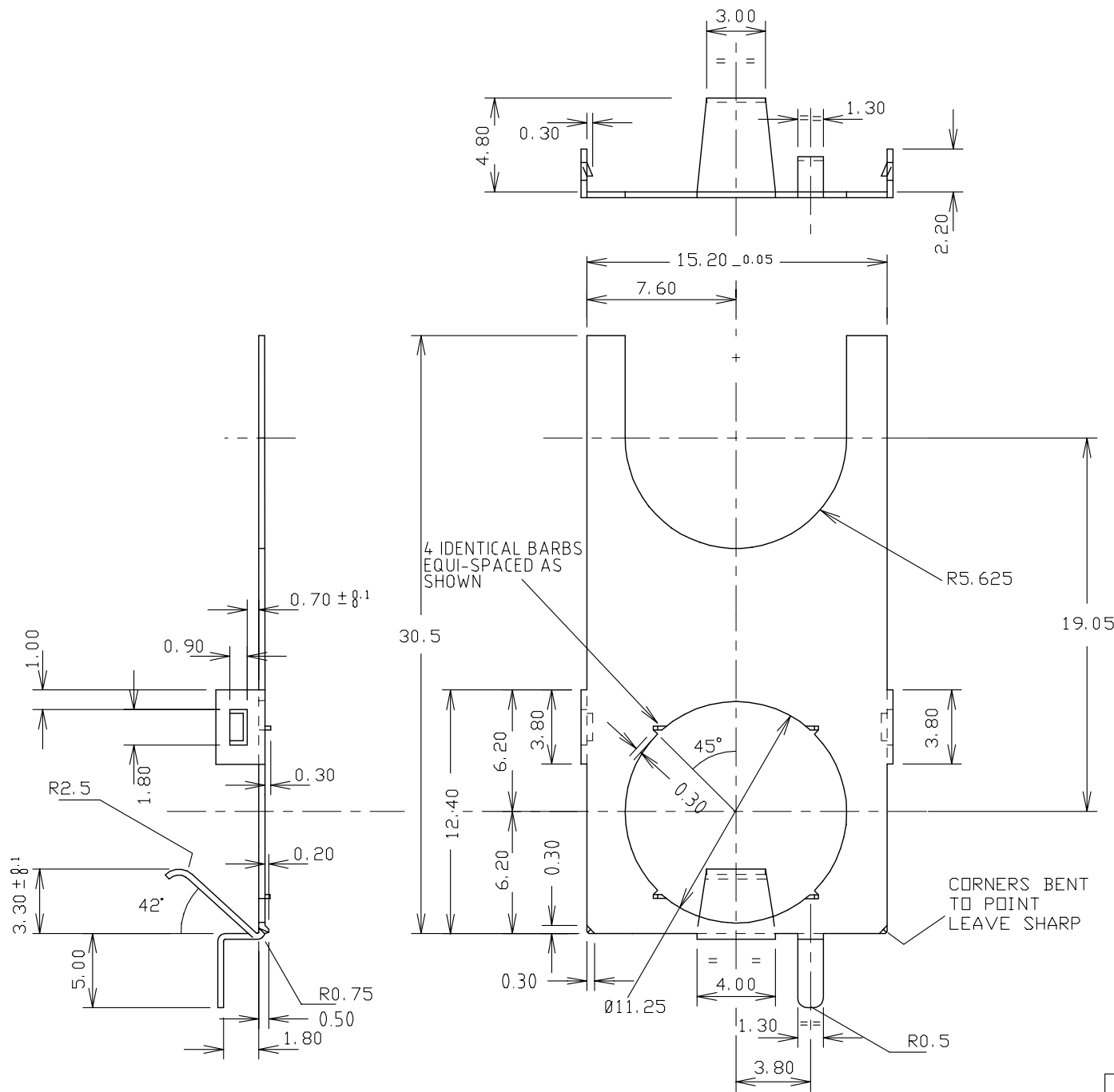


ISS.	AMEND	DATE
1	WAS 157J-11C	30/5/97
2	WAS CL14426	6/3/01



Tolerance	
NO DEC. PLACE	±
1 DEC. PLACE	±
2 DEC. PLACE	± 0.1
DIA. HOLES	± 0.1
ANGLES	± 1/2°
UNLESS OTHERWISE STATED	

1ST DRAWN : 21/4/95

WHERE USED F.R.
SCALE N.T.S.

DIMENSIONS IN MILLIMETERS UNLESS OTHERWISE STATED. WORK TO DIMENSIONS. DO NOT SCALE DRAWING. 3rd ANGLE PROJECTION. REMOVE BURRS. IF IN DOUBT ASK.

Cliff Electronic Components Limited
76 Holmethorpe Ave., Holmethorpe Ind. Estate,
Redhill, Surrey. RH1 2PF. England.
Tel: 01737-771375 Fax: 01737-766012

MATERIAL HARD BRASS TO BS2870 CZ108.H 0.3mm +0.05 -0 THK
FINISH TIN PLATED
DRAWN C.A.M.J. APPD. RWT

TITLE EARTHING WASHER FOR S1/SH JACK
DRWG. No. **FCR 14426**

FORM: A4DRWGH