

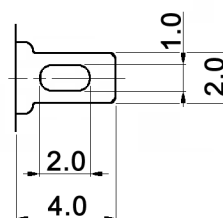


x	Contacts / terminals	Rating	Bushing material
empty	copper alloy, silver plated over nickel	3A, 125V AC	zinc, nickel plated
B	copper alloy, 2µm gold plated over 3µm nickel	min.: 1µA, 20mV DC max.: 25mA, 20V DC	brass, nickel plated

CIRCUIT DIAGRAM

Type	Circuit arrangement	
		
MPS 203 Rx	(ON) 3-1 6-4	ON 3-2 6-5

TERMINAL DETAIL



Specifications:

- Contact resistance: 10mOhm max. at 1.5mA, 200µV AC (1kHz)
- Insulation resistance: 1000MOhm min. at 500V DC
- Dielectric strength: 1000V AC for 1 minute
- Mechanical life: 100 000 cycles
- Electrical life: 25 000 cycles
- Operating force: 3 +/-1N (306 +/-102gf)
- Material:
 - Locating ring: steel, zinc plated
 - Tooth washer: carbon tool steel, zinc plated
 - Hex nut: steel, nickel plated
 - Plunger: brass, nickel plated
 - Frame: stainless steel
 - Case: diallyl phthalate resin, black



Tolerances: ±0.2mm	Date	Name	<h1>MPS 203 Rx</h1>
	02/11	dr	
			<h2>30 23 07</h2>
Materials	05/12	dr	knitter-switch
Modifications	Date	Name	
			Page 1/1