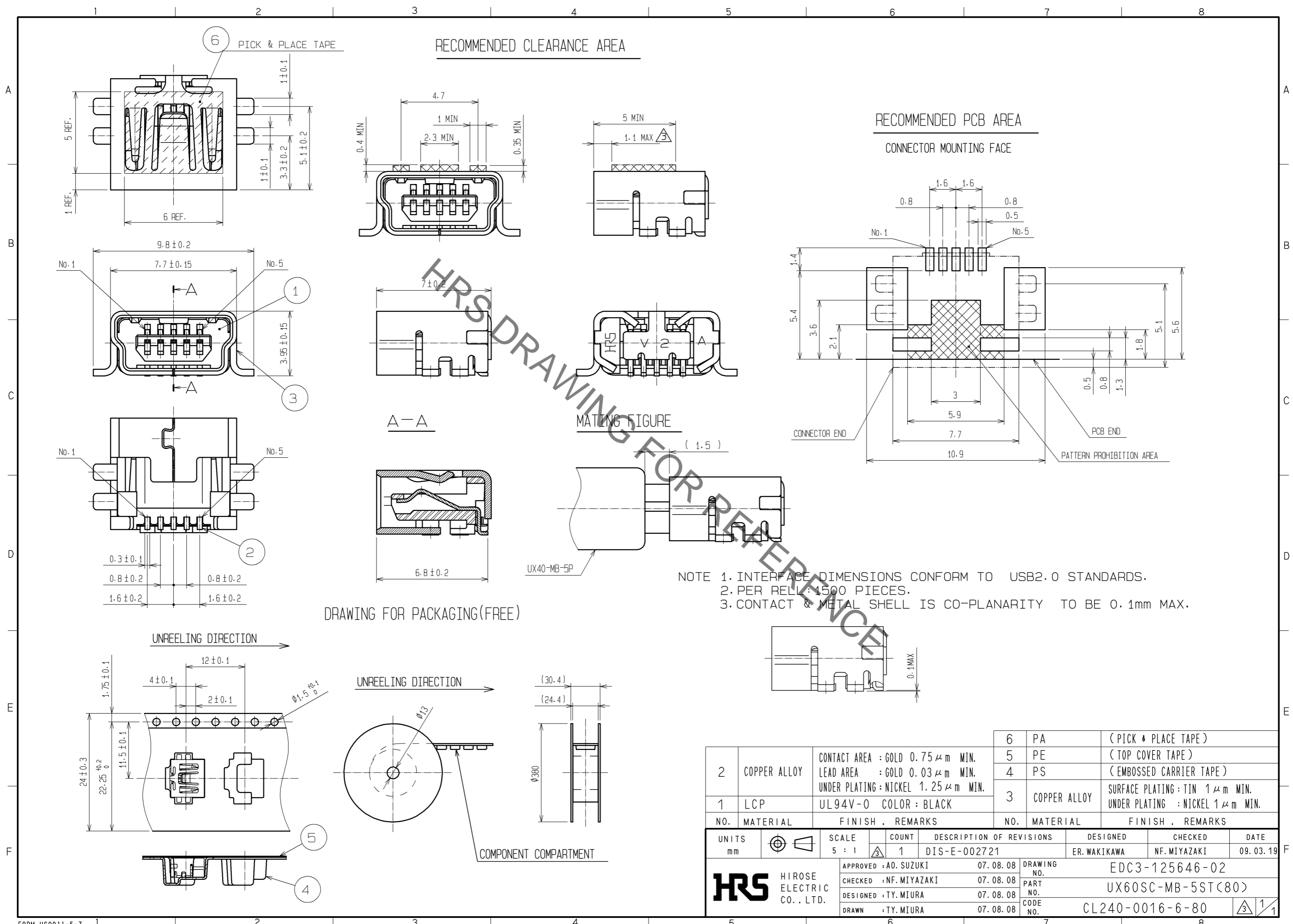


Jul.1.2020 Copyright 2020 HIROSE ELECTRIC CO., LTD. All Rights Reserved.  
 In case of consideration for using Automotive equipment / device which demand high reliability, kindly contact our sales window correspondents.



NOTE 1. INTERFACE DIMENSIONS CONFORM TO USB2.0 STANDARDS.  
 2. PER REL: 1500 PIECES.  
 3. CONTACT & METAL SHELL IS CO-PLANARITY TO BE 0.1mm MAX.

DRAWING FOR PACKAGING(FREE)

2	COPPER ALLOY	CONTACT AREA : GOLD 0.75 μm MIN. LEAD AREA : GOLD 0.03 μm MIN. UNDER PLATING : NICKEL 1.25 μm MIN.	6	PA	( PICK & PLACE TAPE )
1	LCP	UL94V-0 COLOR : BLACK	5	PE	( TOP COVER TAPE )
			4	PS	( EMBOSSED CARRIER TAPE )
			3	COPPER ALLOY	SURFACE PLATING : TIN 1 μm MIN. UNDER PLATING : NICKEL 1 μm MIN.
NO.	MATERIAL	FINISH . REMARKS	NO.	MATERIAL	FINISH . REMARKS

UNITS mm		SCALE 5 : 1	COUNT 1	DESCRIPTION OF REVISIONS DIS-E-002721	DESIGNED ER. WAKIKAWA	CHECKED NF. MIYAZAKI	DATE 09. 03. 19
APPROVED : AO. SUZUKI 07. 08. 08				DRAWING NO. EDC3-125646-02			
CHECKED : NF. MIYAZAKI 07. 08. 08				PART NO. UX60SC-MB-5ST(80)			
DESIGNED : TY. MIURA 07. 08. 08				CODE NO. CL240-0016-6-80			
DRAWN : TY. MIURA 07. 08. 08				1/1			