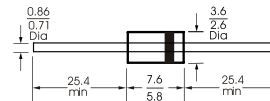
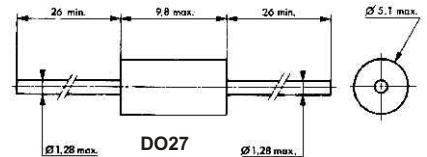


## Сверхбыстрые выпрямительные диоды

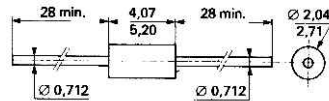
Код:	$V_{Rmax}$ [В]	$I_{Fmax}$ [А]	$V_F$ при [В]	$I_F$ [А]	$t_{rr}$ [нс]	Корпус	Примечания
BYW100/200	200	1,5			35	DO15	
EGP20D	200	2,0	0,95	2,0	50		
BYW98/200	200	3,0			35	DO201AD	
EGP50D	200	5,0	1,0	5,0	50		
EGP50G	400	5,0	1,25	5,0	50		
UF5404	400	3,0	1,7	3,0	50		
UF5408	1000	3,0	1,7	3,0	75		
MUR420	200	4,0	0,875	3,0	25	DO27	
MUR460	600	4,0	1,25	3,0	50		
MUR120	200	1,0	0,875	1,0	35	DO41	
EGP10G	400	1,0	1,25	1,0	50		
UF4004	400	1,0	1,0	1,0	50		
MUR160	600	1,0	1,25	1,0	50		
UF4007	1000	1,0	1,7	1,0	75		
GP02-40	4000	0,25	3,0	1,0			
BYD77D	200	2,0	0,75	1	25	SOD87	
STTA9012TV2	1200	2x45	1,85	45	115	ISOTOP	
BYV255V200	200	2X100			80		
BYV54V200	200	2X50			60		
BYW29F/200	200	8,0			35	ISOWATT220AC	
BYV27/200	200	2,0	1,07	3,0	25	SOD57	
BYV27/400	400	1,9	0,78	2,0	25		
BYV26C	600	1,0	2,5	1,0	30		
BYV79/200	200	14,0	0,9	14,0	30	SOD59	
BYV29-500	500	9,0	1,05	9,0	50		
BYV28/200	200	3,5	1,1	5,0	30	SOD64	
BYR29F/700	700	8,0	1,5	8,0	75	SOT186	
BYV42/200	200	30,0	0,85	15,0	28	TO220AB	
BYV72/200	200	30,0	0,85	15,0	28		
MUR1620CT	200	16,0	1,2	8,0	85		
BYV34-400	400	20,0	0,93	10,0	50		
BYW29E-150	150	8,0			35	TO220AC	
BYW29/200	200	8,0			35		
MUR860	600	8,0	1,5	8,0	50		
STTA1206DI	600	12,0	1,25	12,0	28		
MUR880	800	16,0	1,8	8,0	100		
BYV32/200	200	20,0	1,15	20,0	25		
BYV52PI-200	200	2X30			50		



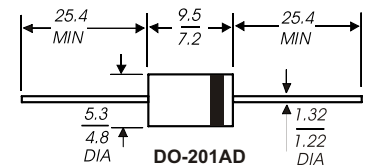
DO-15



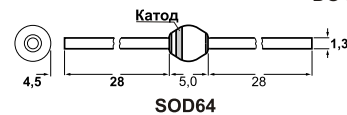
DO27



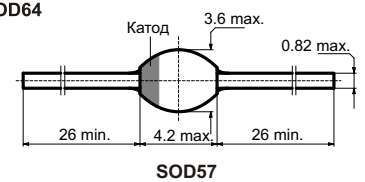
DO41



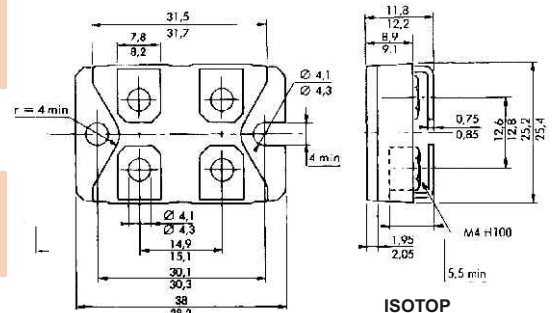
DO-201AD



SOD64



SOD57



ISOTOP

P - два диода с общим катодом