

ACCESSORIES FOR YOUR PCB - LAB

Processing Dishes for PCB lab.

Rigid trays suitable for deloping, etching, stripping, immersion tinning.

The trays, which have a spout to facilitate emptying, are available in three sizes.

Insize:

350 x 450 x 75 mm

250 x 320 x 60 mm

210 x 260 x 50 mm



Stripper for positive and negative photoresists



Green Coat solder paint



Developer for positive presensitized boards



Chemicals for galvanic through hole plating



Developer for negative presensitized boards



Sodium persulfate



Immersion tin SUR-TIN



Stain remover RX 3



FAVORIT

THROUGH-HOLE-PLATING

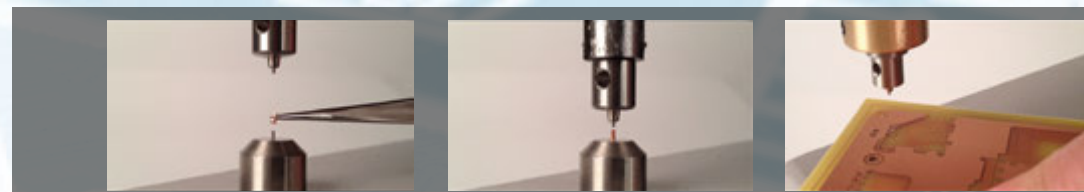
Hand-operated machine, especially for mechanical through-hole-plating purposes. Professional through-hole-platings by individual tools for each rivet diameter. Optimal contacts, even without soldering. Favorit offers high quality results at a low cost level.

Special features:

- Adjustable depth limiter
- Maximum board size: 400 mm

Extend of delivery:

- The offered system includes complete press + tools
- Inclusive 1 x 1000 rivets
- Inclusive 1 set of tools
- Various tools and rivets are available
- Please specify the inner diameter you require
- Different tools have to be used for different diameters



FAVORIT

Dimensions (LxWxH): approx. 95 x 300 x 210 mm

Working depth:

Weight:

200 mm

approx. 4 kg

Rivet with inner diameter/mm: 0.4 0.6 0.8 1.0 1.2 1.5

Required drill diameter/mm: 0.6 0.8 1.0 1.5 1.7 2.0