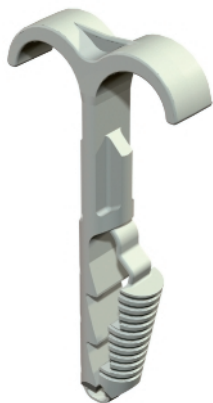


### Double push-fit clip



These push-fit clips are used when installing cables and pipes on walls and ceilings and when running flexible pipes on concrete and in the screed. The single push-fit clips can be used instead of nail clips in concrete and aerated concrete. The advantage of the push-fit clips is that they only have to be pushed into the drilled hole. Anchors and bolts are not needed.

Type	Clamping range D mm	Bore hole Ø mm	Bore hole depth mm	Colour	Pack. pcs	Weight kg/100 pcs.	Item No.	Item No.
1974 2X4-12	4-12	6	40	Light grey	100	0,128	2197855	1511492
1974 2X12-25	12-25	6	40	Light grey	100	0,282	2197863	1511493

**PA** Polyamide

#### Dimensions

