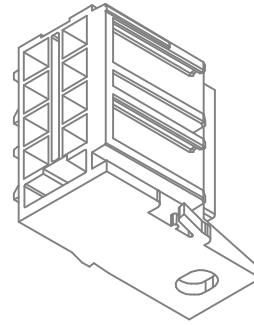
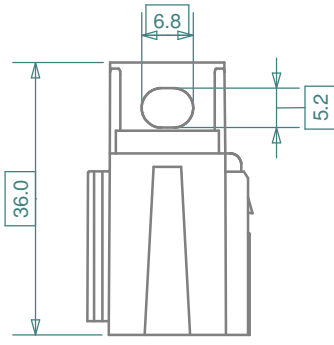
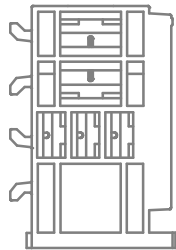
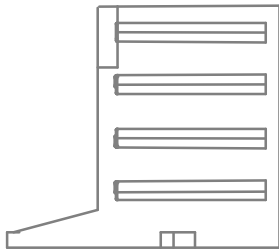
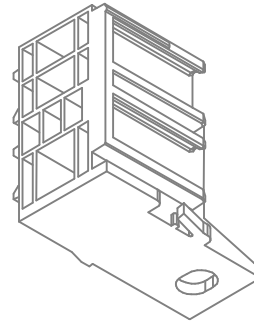
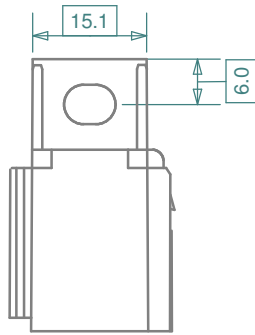
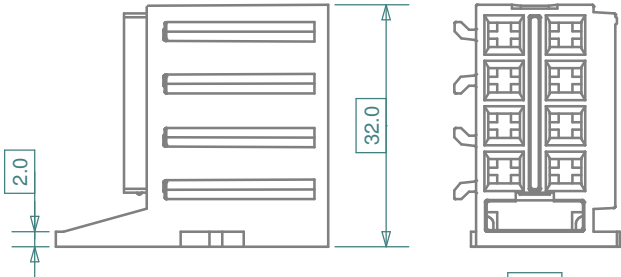


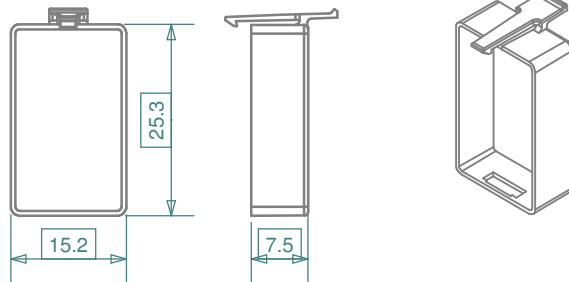
H7210



H7280



H7205



iMaXX ref.	Description
H7210	Fuse holder body, PB GF20, 4 pos. miniOTO
H7205	Cover for fuse holder H7210
H7280	Holder micro relay, ISO 7588-3 contact layout
CCX705FL	Contact, 0.5 - 1.0mm ² , loose
CCX710FL	Contact, 1.5 - 2.5mm ² , loose

Revisions		Date	Appr.
a	09/16	added contact part numbers	EB
		Standards	
		Approved	AdH



Scale	1 : 1	Title	H7200 series	
Projection		Drawing type	schematic	
Tolerance		± 0.2 mm unless otherwise noted	Drawing number	H7200 drawing 1
			Sheet	1 of 1
			Layers / Sheet	0 1 2 6 9 11 Sheet 01