

# 億力光電股份有限公司

## EVERVISION ELECTRONICS CO., LTD.

### Product Specification For LCD Module

(KVPF-7B-002-16)

Model NO. : VGG128004-5TSLWH(RoHS)

REVISION : 2

APPROVAL FOR SPECIFICATIONS ONLY

APPROVAL FOR SPECIFICATIONS AND SAMPLE

CUSTOMER :

STD.


APPROVED BY :

### EVERVISION LCM R&D CENTER


APPROVED BY

CHECKED BY

PREPARED BY

  
Handwritten initials "ZE" and a signature with date "3/1/16" data-bbox="150 600 300 668"/>


DIRECTOR

  
Handwritten date "3/1/16" data-bbox="400 612 466 646"/>

MANAGER



Mechanism Engineer

  
Handwritten date "3/1/16" data-bbox="810 607 875 641"/>

Electronic Engineer

億力光電股份有限公司總公司  
EVERVISION ELECTRONICS CO., LTD.  
台北市中和區建一路 186 號 6 樓之 5  
6F.-5, No.186, Jian 1st Rd., Zhonghe Dist.,  
New Taipei City 235, Taiwan (R.O.C.)  
TEL : +886 2 8227-2788  
FAX : +886 2 8227-2799

億力光電股份有限公司台中分公司  
EVERVISION ELECTRONICS CO., LTD.  
-Taichung Branch  
台中市潭子區建國路 19 號  
No.19, Jianguo Rd., Tanzi Dist.,  
Taichung City 427, Taiwan (R.O.C.)  
TEL : +886 4 2532-8889  
FAX : +886 4 2532-6689

勁佳光電(昆山)有限公司  
VBEST ELECTRONICS(KUNSHAN) Co., Ltd.  
江蘇省昆山市玉山鎮高科技工業園城北路 8 號  
No.8, Chengbei Rd., Hi-Tech Industry Park,  
Yushan Town, Kunshan City, Jiangsu, China.  
TEL : +86 512 5778 7288  
FAX : +86 512 5777 0688

勁佳光電(昆山)有限公司東莞分公司  
VBEST ELECTRONICS(KUNSHAN)Co.,Ltd.  
- DongGuan Branch  
東莞市莞城區東縱大道天寶路 23 號  
No.23 Tian Bao Rd., Dong Zong St.,  
Dong Guan City, Guang Dong, China.  
TEL : +86 769 3887 5000  
FAX : +86 769 3896 0580

<http://www.evervisionlcd.com>

<b>EVERVISION</b>	<b>MODEL NO.</b>		<b>PAGE</b>
	VGG128004-5TSLWH	SPEC SAMPLE	2

## 1. Table of Contents

<b>No.</b>	<b>Contents</b>	<b>Page</b>
1	Table of Contents	2
2	Record of Revisions	3
3	Module Numbering System	4
4	Application	5
5	Features	5
6	General Specifications	5
7	Absolute Maximum Ratings	6
8	Electrical Characteristics	7
9	Block Diagram	9
10	Input / Output Terminals Pin Assignment	10
11	Interface Timing	14
12	Optical Characteristics	24
13	Reliability Test	27
14	Packaging	28
15	Precautions	29
16	Outline Drawing	31
17	Definition of Labels	32
18	Incoming Inspection Standards	34



<b>EVERVISION</b>	<b>MODEL NO.</b>		<b>PAGE</b>
	VGG128004-5TSLWH	SPEC SAMPLE	4

### 3. Module Numbering System

**V G G 1280 04 – 5 T S L W H**

Serial No.: A~Z

Backlight Color:  
**N:** Without Backlight;  
**A:** Amber; **B:** Blue; **G:** Green;  
**L:** Yellow; **O:** Orange; **R:** Red;  
**W:** White; **Y:** YellowGreen;  
**X:** Others

Backlight Type:  
**N:** Without Backlight; **E:** EL; **F:** CCFL;  
**L:** General LED; **H:** High NTSC LED ;  
**R:** RGB LED; **X:** Others

LCD Model:  
**A:** ASTN; **B:** STN Blue; **C:** CSTN; **D:** DSTN;  
**F:** TFT; **G:** STN Gray; **H:** HTN; **I:** IBN;  
**K:** Black Mask TN **L:** LTPS; **M:** MVA;  
**N:** others; **O:** OLED; **P:** PLED; **S:** IPS;  
**T:** TN; **U:** FSC TN; **W:** FSTN Black/white;  
**X:** FFSTN; **Y:** STN Yellow;

LCD Type:  
**R:** Reflective/Positive;  
**S :** Reflective/Negative ;  
**F :** Transflective/Positive ;  
**G:** Transflective/Negative ;  
**U:** Transmissive/Positive ;  
**T:** Transmissive/Negative ; **N:** Others

Temperature Range & View Direction:  
General Purpose : **1:**6H **2:**12H **3:**3H **4:**9H **5:**Others  
High Performance: **6:**6H **7:**12H **8:**3H **9:**9H **0:**Others

STD Product Serial No.: 01~99  
Customer Made Serial No.: A1,A2...A9,B1,B2...B9,C1..

Display Function:  
Segment Number / Characters Lines / Column and Row Dots  
/ Length \* Width of Other

Display Type:  
**C:** Character Type; **G:** Graphic Type; **S:** Segment Type; **O:** Other

Package Type:  
**B:** COB; **F:** COF; **G:** COG; **H:** Heat Seal; **S:** SMT; **T:** TAB; **O:** Others

<b>EVERVISION</b>	<b>MODEL NO.</b>		<b>PAGE</b>
	VGG128004-5TSLWH	SPEC SAMPLE	5

#### 4. Application

This specification is applied to the 10.1 inch WXGA supported TFT-LCD module, and can display true 16.7M colors (8 bit/ color). The module is designed for OA, Car TV application and other electronic products which require flat panel display of digital signal interface. This module is composed of a 10.1" TFT-LCD panel, a driver circuit, and backlight unit and used as the input devices for general electric appliances via both finger and Capacitive stylus pen.

#### 5. Features

- WXGA (1280×800 pixels) resolution.
- LVDS Receiver 24 bit Interface
- Dot inversion mode with stripe type.
- LED driver circuit is built in this module to provide PWM Dimmer function.
- Projected Capacitive Touch
  - I<sup>2</sup>C Interface
  - Multi Touch (Ten points)

#### 6. General Specifications

Item	Specifications	Unit
Screen Size	10.1 (Diagonal)	inch
Display Format	1280RGB(H)×800(V)	dot
Active Area	216.96(H)×135.6(V)	mm
Dot Pitch	0.0565(H)×0.1695(V)	mm
Pixel Configuration	RGB Vertical Stripe	-
Display Mode	AAS Type Transmissive Mode Normally Black	-
Surface Treatment	Hard coating	-
Viewing Direction	Full view angle	-
Outline Dimension	229.46(W)×149.1(H)×4.5(D)	mm
Weight	325	g
RoHS Compliance	Evervision certifies this product to be in compliance with European Union Directive 2011/65/EU on the restriction of certain hazardous substances in electrical and electronic equipment.	-

<b>EVERVISION</b>	<b>MODEL NO.</b>		<b>PAGE</b>
	VGG128004-5TSLWH	SPEC SAMPLE	6

## 7. Absolute Maximum Ratings

### 7.1 Absolute Ratings of Environment

Item	Symbol	Value		Unit	Note
		Min.	Max.		
Storage Temperature	T <sub>ST</sub>	-20	+60	°C	(1)(2)
Operating Ambient Temperature	T <sub>OP</sub>	0	+50	°C	(1)(2)

Note1: Background color changes slightly depending on ambient temperature.

This phenomenon is reversible.

Note2: Please refer to item of RELIABILITY.

### 7.2 Electrical Absolute Ratings

#### 7.2.1 TFT-LCD Module

(Ta=25±2°C, GND=V<sub>SS</sub>=0V)

Item	Symbol	Value		Unit	Note
		Min.	Max.		
Digital Power Supply Voltage	V <sub>CC</sub>	-0.3	4.0	V	-
LVDS Driver Output Voltage	-	-0.3	V <sub>CC</sub> + 0.3	V	-

#### 7.2.2 LED Driver Absolute Maximum Ratings

(Ta=25±2°C)

Item	Symbol	Value		Unit	Note
		Min.	Max.		
LED Driver Supply Voltage	V <sub>LED</sub>	-0.3	17	V	(1)
LED Driver PWM	PWM	-0.3	6	V	(1)

Note (1) Permanent damage to the device may occur if maximum values are exceeded or reverse voltage is loaded.

## 8. Electrical Characteristics

### 8.1 TFT-LCD Module

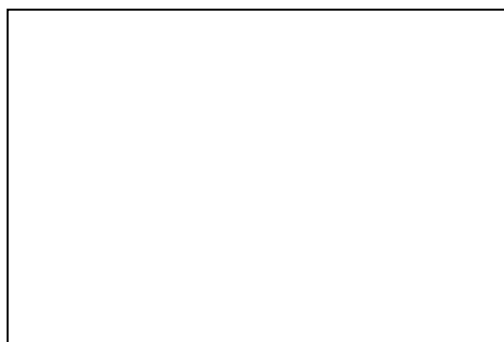
(Ta=25±2°C)

Item	Symbol	Value			Unit	Note
		Min.	Typ.	Max.		
Power Supply Voltage	V <sub>CC</sub>	3.0	3.3	3.6	V	-
Power Supply Current	I <sub>CC</sub>	-	270	378	mA	(1)
Differential Input High Threshold Voltage	V <sub>TH</sub>	-	-	100	mV	-
Differential Input Low Threshold Voltage	V <sub>TL</sub>	-100	-	-	mV	-
Power Consumption	P <sub>L</sub>	-	891	1247	mW	(1)
VSYNC Frequency	F <sub>V</sub>	-	60	-	Hz	-
DCLK Frequency	DCLK	-	71.1	-	MHz	-

Note (1) The specified power consumption is under the conditions at V<sub>CC</sub>=3.3V,

F<sub>V</sub>=60Hz, whereas a power dissipation check pattern below is displayed.

White Pattern / 255 Gray



Active Area

## 8.2 LED Driver Unit

(Ta=25±2°C)

Item	Symbol	Value			Unit	Note
		Min.	Typ.	Max.		
Voltage of LED Driver Unit	V <sub>LED</sub>	11.5	12.0	12.5	V	-
Current of LED Driver Unit	I <sub>LED</sub>	-	260	364	mA	V <sub>LED</sub> =12V、 B/L=260mA
Voltage of LED Driver Unit	V <sub>LED</sub>	4.5	5.0	5.5	V	-
Current of LED Driver Unit	I <sub>LED</sub>	-	630	882	mA	V <sub>LED</sub> =5V、 B/L=260mA
PWM signal Low voltage	V <sub>PWML</sub>	0	-	0.2	V	-
PWM signal High voltage	V <sub>PWMH</sub>	4	5.0	5.5	V	-
PWM frequency	f <sub>PWM</sub>	100	-	1000	Hz	-
PWM Pulse width	t <sub>PWMH</sub>	10	-	-	us	-
LED Life Time(25°C)	-	50000	60000	-	hr	(1)

Note (1) : LED life time is defined as under 25±2°C , when the average brightness decrease to 50% of original brightness

## 8.3 Projected Capacitive Touch

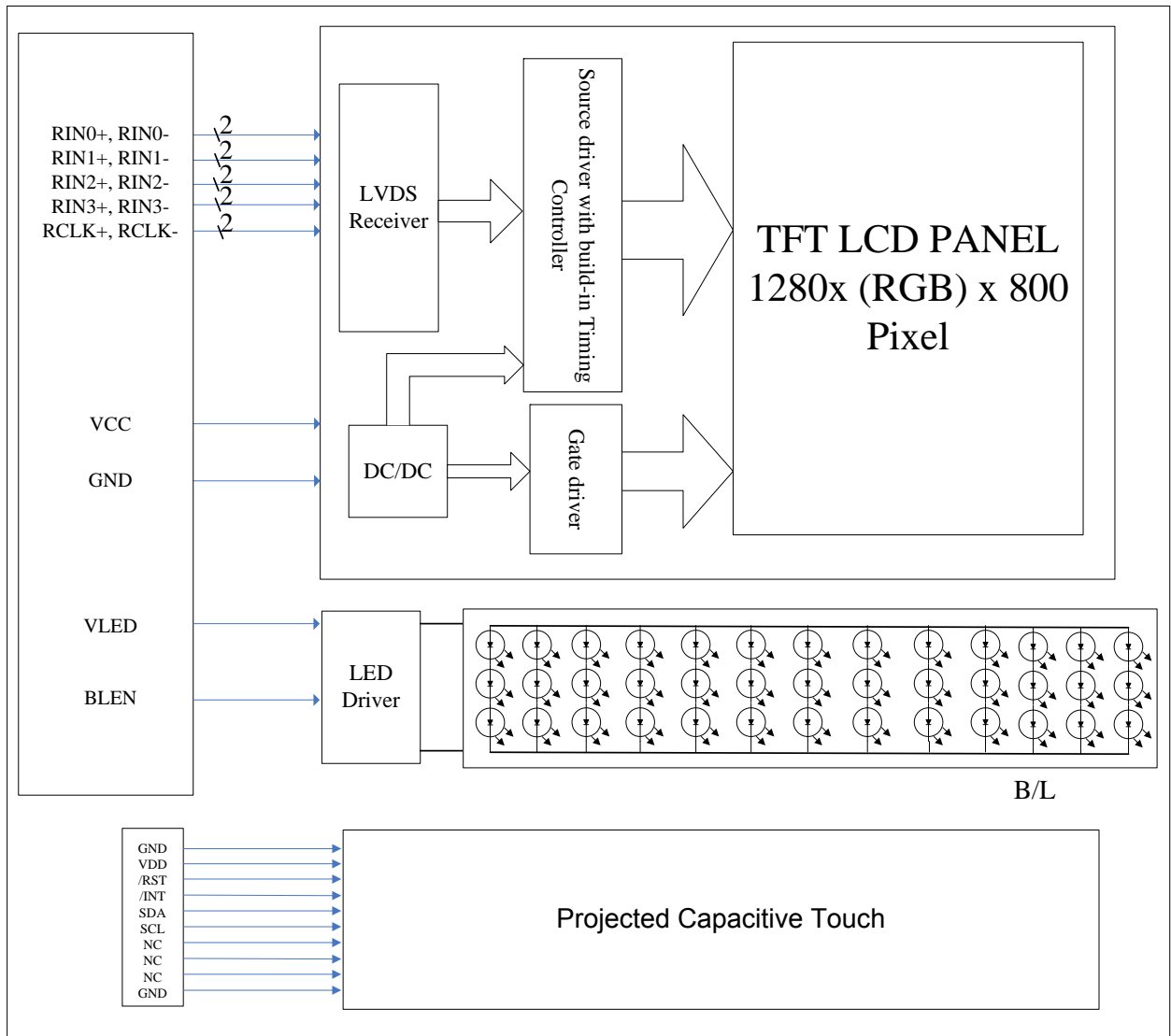
Item	Symbol	Value			Unit	Note
		Min.	Typ.	Max.		
Operating Voltage	VDD	3.0	3.3	3.6	V	-
Power Supply Current	IDD	-	23.6	33.1	mA	(1)
Input High Threshold Voltage	V <sub>IH</sub>	0.7VDD	-	VDD	V	-
Input Low Threshold Voltage	V <sub>IL</sub>	-0.3	-	0.3VDD	V	-
Output High Threshold Voltage	V <sub>OH</sub>	0.7VDD	-	-	V	-
Output Low Threshold Voltage	V <sub>OL</sub>	-	-	0.3VDD	V	-
Power Consumption	P <sub>L</sub>	-	77.88	109.23	mW	@3.3V
Interface		I <sup>2</sup> C				-
Function		Multi Touch				-

Note (1) This test condition is touched with 10 points.



**9. Block Diagram**

**9.1 TFT-LCD Module with Backlight Unit**



## 10. Input / Output Terminals Pin Assignment

### 10.1 TFT-LCD Module

Connector: HIROSE DF19G-30P-1H

Pin No.	Symbol	I/O	Description
1	V <sub>CC</sub>	I	+3.3V power supply
2	V <sub>CC</sub>	I	+3.3V power supply
3	GND	I	Ground
4	GND	I	Ground
5	RIN3+	I	LVDS Signal (+) Channel 3
6	RIN3-	I	LVDS Signal (-) Channel 3
7	GND	I	Ground
8	RCLK+	I	LVDS Clock Signal (+)
9	RCLK-	I	LVDS Clock Signal (-)
10	GND	I	Ground
11	RIN2+	I	LVDS Signal (+) Channel 2
12	RIN2-	I	LVDS Signal (-) Channel 2
13	GND	I	Ground
14	RIN1+	I	LVDS Signal (+) Channel 1
15	RIN1-	I	LVDS Signal (-) Channel 1
16	GND	I	Ground
17	RIN0+	I	LVDS Signal (+) Channel 0
18	RIN0-	I	LVDS Signal (-) Channel 0
19	GND	I	Ground
20	GND	I	Ground
21	NC	I	Not Connection
22	NC	I	Not Connection
23	NC	I	Not Connection

<b>EVERVISION</b>	<b>MODEL NO.</b>		<b>PAGE</b>
	VGG128004-5TSLWH	SPEC SAMPLE	11

24	NC	I	Not Connection
25	BLEN	I	Note 1
26	NC	I	Not Connection
27	VLED	I	LED driver power supply
28	VLED	I	LED driver power supply
29	GND	I	Ground
30	GND	I	Ground

Note 1: On/Off Control Input and Dimming Command Input.

A voltage greater than 0.7V will turn on the chip.

When the BLEN pin voltage rises from 0.7V to 1.4V, The LED current will change from 0% to 100% of the maximum LED current.

To use PWM dimming, apply a 100Hz to 1kHz square wave signal with amplitude greater than 1.4V to this pin.

## 10.2 Improved Projected Capacitive Touch

Connector: CVILUX CF25101D0R0-05

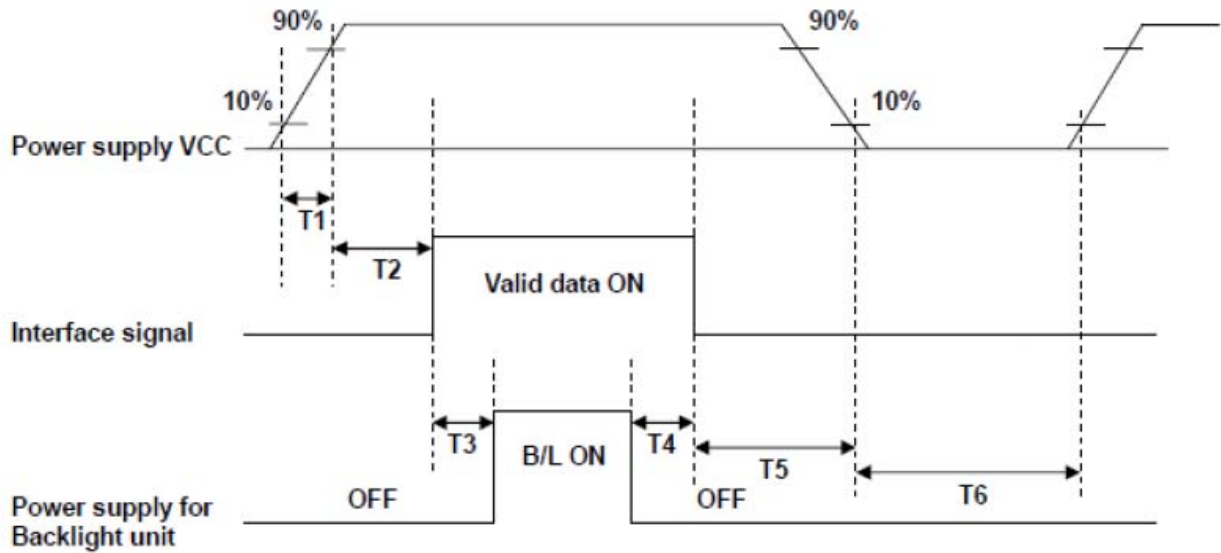
Pin No.	Symbol	I/O	Description
1	GND	I	System ground.
2	VDD	I	+3.3V power supply.
3	/RST	I	External reset signal, active low.
4	/INT	O	Interrupt signal, active low, asserted to request Host start a new transaction.
5	SDA	I/O	I <sup>2</sup> C data signal.
6	SCL	I	I <sup>2</sup> C clock signal.
7	NC	-	Not Connection
8	NC	-	Not Connection
9	NC	-	Not Connection
10	GND	I	System ground.

### 10.3 Color Data Input Assignment

The brightness of each primary color(red, green and blue) is based on the 8 bit gray scale data input for the color. The higher the binary input, the brighter the color. The table provides the assignment of color versus data input.

Color		Data Signal																							
		Red								Green								Blue							
		R7	R6	R5	R4	R3	R2	R1	R0	G7	G6	G5	G4	G3	G2	G1	G0	B7	B6	B5	B4	B3	B2	B1	B0
Basic Colors	Black	0	0	0	0	0	0	0	0	0	0	0	0	0	0	0	0	0	0	0	0	0	0	0	
	Red	1	1	1	1	1	1	1	1	0	0	0	0	0	0	0	0	0	0	0	0	0	0	0	
	Green	0	0	0	0	0	0	0	0	1	1	1	1	1	1	1	0	0	0	0	0	0	0	0	
	Blue	0	0	0	0	0	0	0	0	0	0	0	0	0	0	0	1	1	1	1	1	1	1	1	
	Cyan	0	0	0	0	0	0	0	0	1	1	1	1	1	1	1	1	1	1	1	1	1	1	1	
	Magenta	1	1	1	1	1	1	1	1	0	0	0	0	0	0	0	1	1	1	1	1	1	1	1	
	Yellow	1	1	1	1	1	1	1	1	1	1	1	1	1	1	1	0	0	0	0	0	0	0	0	
	White	1	1	1	1	1	1	1	1	1	1	1	1	1	1	1	1	1	1	1	1	1	1	1	
Gray Scale Of RED	Red(0) / Dark	0	0	0	0	0	0	0	0	0	0	0	0	0	0	0	0	0	0	0	0	0	0		
	Red(1)	0	0	0	0	0	0	1	0	0	0	0	0	0	0	0	0	0	0	0	0	0	0		
	Red(2)	0	0	0	0	0	0	1	0	0	0	0	0	0	0	0	0	0	0	0	0	0	0		
	:	:	:	:	:	:	:	:	:	:	:	:	:	:	:	:	:	:	:	:	:	:	:		
	:	:	:	:	:	:	:	:	:	:	:	:	:	:	:	:	:	:	:	:	:	:	:		
	Red(253)	1	1	1	1	1	1	0	1	0	0	0	0	0	0	0	0	0	0	0	0	0	0		
	Red(254)	1	1	1	1	1	1	1	0	0	0	0	0	0	0	0	0	0	0	0	0	0	0		
	Red(255)	1	1	1	1	1	1	1	1	0	0	0	0	0	0	0	0	0	0	0	0	0	0		
Gray Scale Of Green	Green(0) / Dark	0	0	0	0	0	0	0	0	0	0	0	0	0	0	0	0	0	0	0	0	0	0		
	Green(1)	0	0	0	0	0	0	0	0	0	0	0	0	0	0	1	0	0	0	0	0	0	0		
	Green(2)	0	0	0	0	0	0	0	0	0	0	0	0	0	1	0	0	0	0	0	0	0	0		
	:	:	:	:	:	:	:	:	:	:	:	:	:	:	:	:	:	:	:	:	:	:	:		
	:	:	:	:	:	:	:	:	:	:	:	:	:	:	:	:	:	:	:	:	:	:	:		
	Green(253)	0	0	0	0	0	0	0	0	1	1	1	1	1	1	0	1	0	0	0	0	0	0		
	Green(254)	0	0	0	0	0	0	0	0	1	1	1	1	1	1	0	0	0	0	0	0	0	0		
	Green(255)	0	0	0	0	0	0	0	0	1	1	1	1	1	1	1	0	0	0	0	0	0	0		
Gray Scale Of Blue	Blue(0) / Dark	0	0	0	0	0	0	0	0	0	0	0	0	0	0	0	0	0	0	0	0	0	0		
	Blue(1)	0	0	0	0	0	0	0	0	0	0	0	0	0	0	0	0	0	0	0	0	0	1		
	Blue(2)	0	0	0	0	0	0	0	0	0	0	0	0	0	0	0	0	0	0	0	0	0	1		
	:	:	:	:	:	:	:	:	:	:	:	:	:	:	:	:	:	:	:	:	:	:	:		
	:	:	:	:	:	:	:	:	:	:	:	:	:	:	:	:	:	:	:	:	:	:	:		
	Blue(253)	0	0	0	0	0	0	0	0	0	0	0	0	0	0	0	1	1	1	1	1	1	0		
	Blue(254)	0	0	0	0	0	0	0	0	0	0	0	0	0	0	0	1	1	1	1	1	1	0		
	Blue(255)	0	0	0	0	0	0	0	0	0	0	0	0	0	0	0	1	1	1	1	1	1	1		

**10.4 Power ON/OFF Sequence**



**POWER SEQUENCE TABLE**

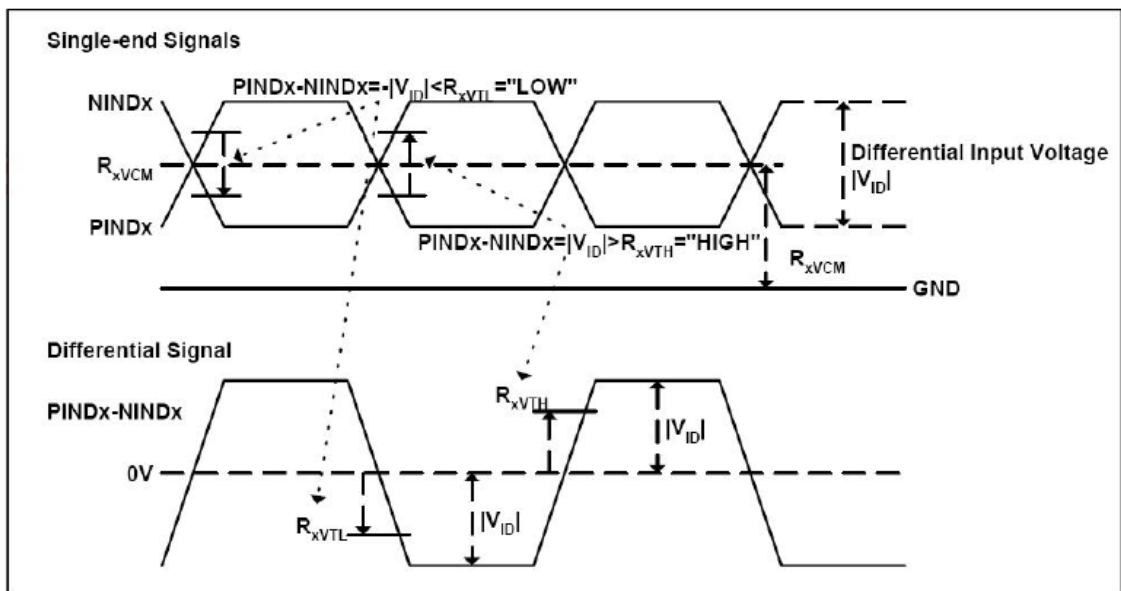
Parameter	Value			Units
	Min.	Typ	Max.	
T1	0.5	-	10	ms
T2	20	-	70	ms
T3	200	-	-	ms
T4	200	-	-	ms
T5	20	-	70	ms
T6	1000	-	-	ms

## 11. Interface Timing

### 11.1 Input Signal Characteristics

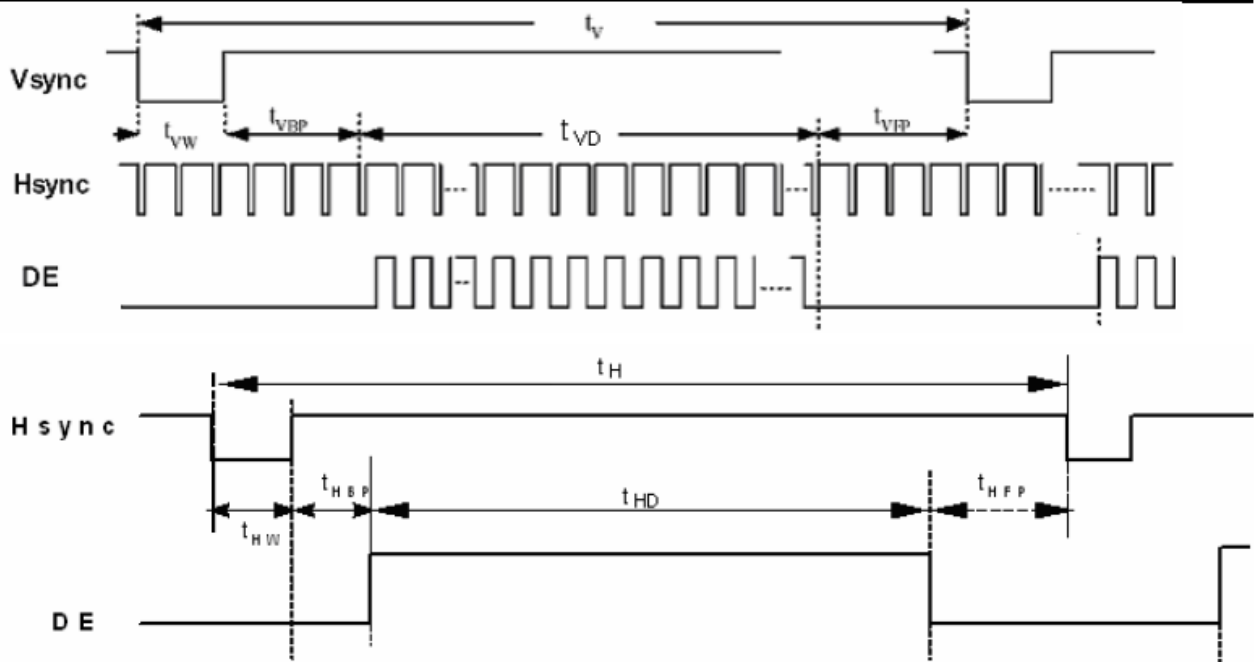
#### 11.1.1.AC Electrical Characteristics

Parameter	Symbol	Values			Unit	Remark
		Min.	Typ.	Max.		
LVDS Differential input high Threshold voltage	$R_{xVTH}$	-	-	+100	mV	$R_{xVCM}=1.2V$
LVDS Differential input low Threshold voltage	$R_{xVTL}$	-100	-	-	mV	
LVDS Differential input common mode voltage	$R_{xVCM}$	0.7	-	1.6	V	
LVDS Differential voltage	$ V_{ID} $	200	-	600	mV	

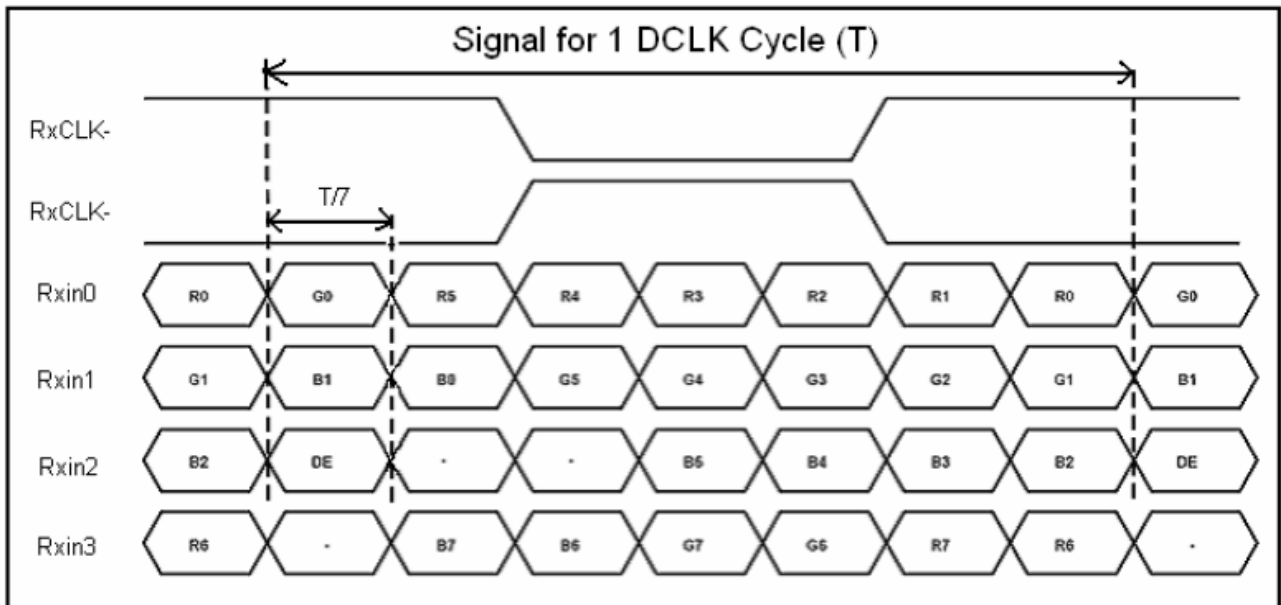


**11.1.2. Timing**

Item	Symbol	Values			Unit	Remark
		Min.	Typ.	Max.		
Clock Frequency	1/Tc	(68.9)	71.1	(73.4)	MHz	Frame rate =60Hz
Horizontal display area	tHD	1280			Tc	
HS period time	tH	(1410)	1440	(1470)	Tc	
HS Width +Back Porch +Front Porch	tHW+ tHBP +tHFP	(60)	160	(190)	Tc	
Vertical display area	tVD	800			tH	
VS period time	tV	(815)	823	(833)	tH	
VS Width +Back Porch +Front Porch	twV+ tvBP +tvFP	(15)	23	(33)	tH	



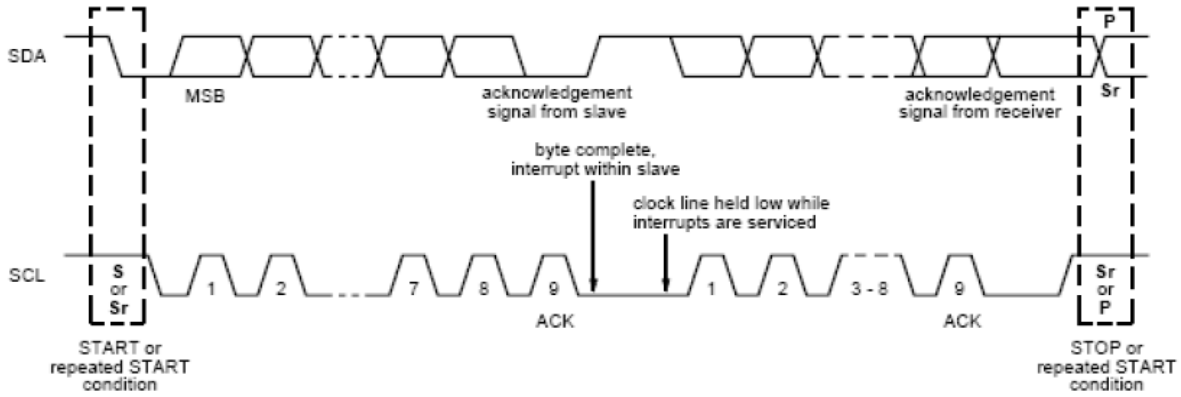
**11.1.3. LVDS Data Input Format**





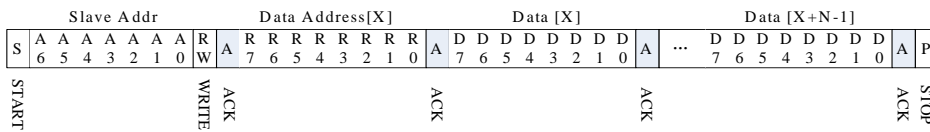
## 11.2 Timing Requirement of Projected Capacitive Touch

### 11.2.1 I2C Data Transfer Format

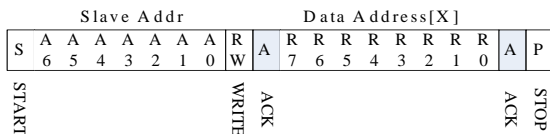


Mnemonics	Description
S	I <sup>2</sup> C Start or I <sup>2</sup> C Restart
A[6:0]	Slave Address = 7'b0111000
W	1'b0: Write
R	1'b1: Read
C	ACK
P	STOP: the indicate the end of a packet (if this bit is missing, S will indicate the end of the current packet and the beginning of the next packet)

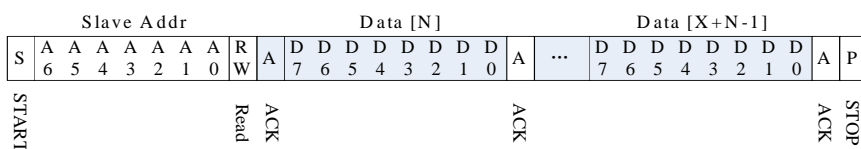
#### Write N bytes to I2C slave



#### Set Data Address



#### Read X bytes from I<sup>2</sup>C Slave

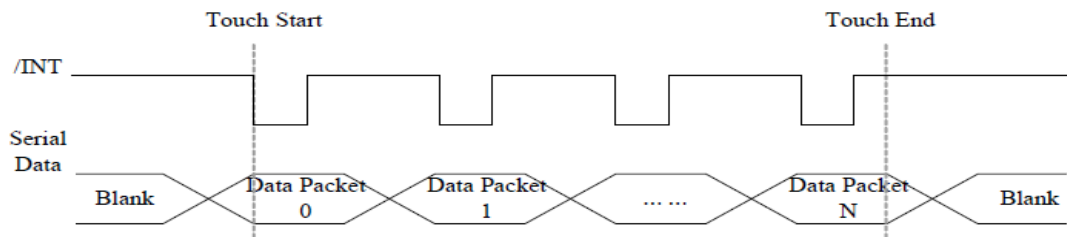


### 11.2.2 I2C Timing Characteristics

(Ta=25±2°C)

Parameter	Min	Max	Unit
SCL frequency	-	400	kHz
Bus free time between a STOP and START condition	4.7	-	μs
Hold time (repeated) START condition	4.0	-	μs
Data setup time	250	-	ns
Setup time for a repeated START condition	4.7	-	μs
Setup time for STOP condition	4.0	-	μs

### 11.2.3 Interrupt Trigger Mode



### 11.2.4 I2C Operating Mode Register Map

Address	Name	Bit 7	Bit 6	Bit 5	Bit 4	Bit 3	Bit 2	Bit 1	Bit 0	Host Access
Op,00h	DEVICE_MODE		Device Mode[2:0]							RW
Op,01h	Reserved									R
Op,02h	TD_STATUS					Number of touch points[3:0]				R
Op,03h	TOUCH1_YH	1 <sup>st</sup> Event Flag				1 <sup>st</sup> Touch Y Position[11:8]				R
Op,04h	TOUCH1_YL	1 <sup>st</sup> Touch Y Position[7:0]								R
Op,05h	TOUCH1_XH	1 <sup>st</sup> Touch ID[3:0]					1 <sup>st</sup> Touch X Position[11:8]			R
Op,06h	TOUCH1_XL	1 <sup>st</sup> Touch X Position[7:0]								R
Op,07h	Reserved									R
Op,08h	Reserved									R
Op,09h	TOUCH2_YH	2 <sup>nd</sup> Event Flag				2 <sup>nd</sup> Touch Y Position[11:8]				R

<b>EVERVISION</b>	<b>MODEL NO.</b>		<b>PAGE</b>
	VGG128004-5TSLWH	SPEC SAMPLE	19

Op,0Ah	TOUCH2_YL	2 <sup>nd</sup> touch Y Position[7:0]		R
Op,0Bh	TOUCH2_XH	2 <sup>nd</sup> Touch ID[3:0]	2 <sup>nd</sup> Touch X Position[11:8]	R
Op,0Ch	TOUCH2_XL	2 <sup>nd</sup> Touch X Position[7:0]		R
Op,0Dh	Reserved			R
Op,0Eh	Reserved			R
Op,0Fh	TOUCH3_YH	3 <sup>rd</sup> Event Flag	3 <sup>rd</sup> Touch Y Position[11:8]	R
Op,10h	TOUCH3_YL	3 <sup>rd</sup> Touch Y Position[7:0]		R
Op,11h	TOUCH3_XH	3 <sup>rd</sup> Touch ID[3:0]	3 <sup>rd</sup> Touch X Position[11:8]	R
Op,12h	TOUCH3_XL	3 <sup>rd</sup> Touch X Position[7:0]		R
Op,13h	Reserved			R
Op,14h	Reserved			R
Op,15h	TOUCH4_YH	4 <sup>th</sup> Event Flag	4 <sup>th</sup> Touch Y Position[11:8]	R
Op,16h	TOUCH4_YL	4 <sup>th</sup> Touch Y Position[7:0]		R
Op,17h	TOUCH4_XH	4 <sup>th</sup> Touch ID[3:0]	4 <sup>th</sup> Touch X Position[11:8]	R
Op,18h	TOUCH4_XL	4 <sup>th</sup> Touch X Position[7:0]		R
Op,19h	Reserved			R
Op,1Ah	Reserved			R
Op,1Bh	TOUCH5_YH	5 <sup>th</sup> Event Flag	5 <sup>th</sup> Touch Y Position[11:8]	R
Op,1Ch	TOUCH5_YL	5 <sup>th</sup> Touch Y Position[7:0]		R
Op,1Dh	TOUCH5_XH	5 <sup>th</sup> Touch ID[3:0]	5 <sup>th</sup> Touch X Position[11:8]	R
Op,1Eh	TOUCH5_XL	5 <sup>th</sup> Touch X Position[7:0]		R
Op,1Fh	Reserved			R
Op,20h	Reserved			R
Op,21h	TOUCH6_YH	6 <sup>th</sup> Event Flag	6 <sup>th</sup> Touch Y Position[11:8]	R
Op,22h	TOUCH6_YL	6 <sup>th</sup> Touch Y Position[7:0]		R
Op,23h	TOUCH6_XH	6 <sup>th</sup> Touch ID[3:0]	6 <sup>th</sup> Touch X Position[11:8]	R
Op,24h	TOUCH6_XL	6 <sup>th</sup> Touch X Position[7:0]		R
Op,25h	Reserved			R
Op,26h	Reserved			R

<b>EVERVISION</b>	<b>MODEL NO.</b>		<b>PAGE</b>
	VGG128004-5TSLWH	SPEC SAMPLE	20

Op,27h	TOUCH7_YH	7 <sup>th</sup> Event Flag	7 <sup>th</sup> Touch Y Position[11:8]	R
Op,28h	TOUCH7_YL	7 <sup>th</sup> Touch Y Position[7:0]		R
Op,29h	TOUCH7_XH	7 <sup>th</sup> Touch ID[3:0]	7 <sup>th</sup> Touch X Position[11:8]	R
Op,2Ah	TOUCH7_XL	7 <sup>th</sup> Touch X Position[7:0]		R
Op,2Bh	Reserved			R
Op,2Ch	Reserved			R
Op,2Dh	TOUCH8_YH	8 <sup>th</sup> Event Flag	8 <sup>th</sup> Touch Y Position[11:8]	R
Op,2Eh	TOUCH8_YL	8 <sup>th</sup> Touch Y Position[7:0]		R
Op,2Fh	TOUCH8_XH	8 <sup>th</sup> Touch ID[3:0]	8 <sup>th</sup> Touch X Position[11:8]	R
Op,30h	TOUCH8_XL	8 <sup>th</sup> Touch X Position[7:0]		R
Op,31h	Reserved			R
Op,32h	Reserved			R
Op,33h	TOUCH9_YH	9 <sup>th</sup> Event Flag	9 <sup>th</sup> Touch Y Position[11:8]	R
Op,34h	TOUCH9_YL	9 <sup>th</sup> Touch Y Position[7:0]		R
Op,35h	TOUCH9_XH	9 <sup>th</sup> Touch ID[3:0]	9 <sup>th</sup> Touch X Position[11:8]	R
Op,36h	TOUCH9_XL	9 <sup>th</sup> Touch X Position[7:0]		R
Op,37h	Reserved			R
Op,38h	Reserved			R
Op,39h	TOUCH10_YH	10 <sup>th</sup> Event Flag	10 <sup>th</sup> Touch Y Position[11:8]	R
Op,3Ah	TOUCH10_YL	10 <sup>th</sup> Touch Y Position[7:0]		R
Op,3Bh	TOUCH10_XH	10 <sup>th</sup> Touch ID[3:0]	10 <sup>th</sup> Touch X Position[11:8]	R
Op,3Ch	TOUCH10_XL	10 <sup>th</sup> Touch X Position[7 : 0]		R
Op,3Dh	Reserved			R
Op,3Eh	Reserved			R

### 11.2.5 DEVICE\_MODE

This register is the device mode register, configure it to determine the current mode of the chip.

Address	Bit Address	Register Name	Description
Op,00h	6:4	Device Mode [2:0]	000b Normal operating Mode 001b System Information Mode (Reserved) 100b Test Mode – read raw data (Reserved)

### 11.2.6 TD\_STATUS

This register is the Touch Data status register.

Address	Bit Address	Register Name	Description
Op,02h	3:0	Number of touch points[3:0]	How many points detected. 1-10 is valid.

### 11.2.7 TOUCHn\_YH (n:1-10)

This register describes MSB of the Y coordinate of the nth touch point and the corresponding event flag.

Address	Bit Address	Register Name	Description
Op,03h ~ Op,39h	7:6	Event Flag	00b: Put Down 01b: Put Up 10b: Contact 11b: No event
	5:4		Reserved
	3:0	Touch Y Position [11:8]	MSB of Touch Y Position in pixels

**11.2.8 TOUCHn\_YL (n:1-10)**

This register describes LSB of the Y coordinate of the nth touch point.

Address	Bit Address	Register Name	Description
Op,04h ~ Op,3Ah	7:0	Touch Y Position [7:0]	LSB of the Touch Y Position in pixels

**11.2.9 TOUCHn\_XH (n:1-10)**

This register describes MSB of the X coordinate of the nth touch point and corresponding touch ID.

Address	Bit Address	Register Name	Description
Op,05h ~ Op,3Bh	7:4 3:0	Touch ID[3:0] Touch X Position [11:8]	Touch ID of Touch Point MSB of Touch X Position in pixels

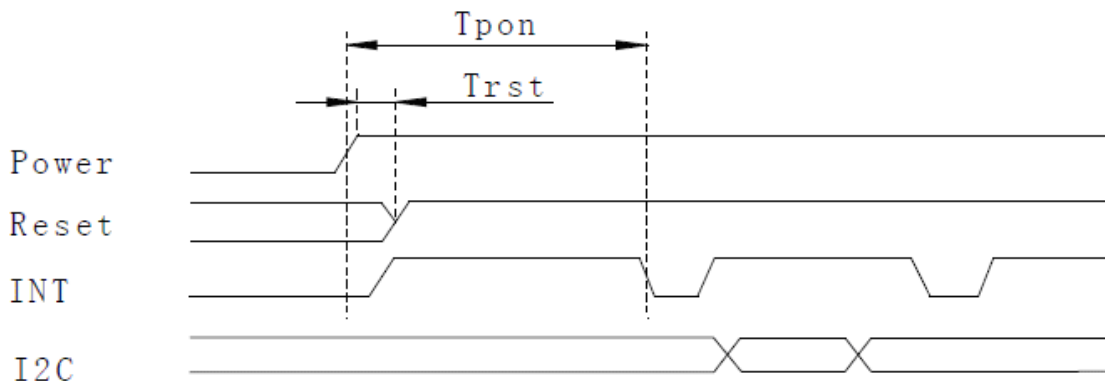
**11.2.10 TOUCHn\_XL (n:1-10)**

This register describes LSB of the X coordinate of the nth touch point.

Address	Bit Address	Register Name	Description
Op,06h ~ Op,3Ch	7:0	Touch X Position [7:0]	LSB of The Touch X Position in pixels

### 11.3 POWER ON/Reset Sequence

Reset and GPIO such as /INT and I2C are advised to be low before powering on. The signal of waking up should be set to be high after powering on. /INT signal will be sent to the host after initializing all parameters and then start to report points to the host.



*Power on Sequence*

Reset time must be enough to guarantee reliable reset, the time of starting to report point after resetting approach to the time of starting to report point after powering on.

Parameter	Description	Min	Max	Units
Tris	Rise time from 0.1VDD to 0.9VDD	--	10	ms
Tpon	Time of starting to report point after powering on	300	--	ms
Trsi	Time of starting to report point after resetting	300	--	ms
Trst	Reset time	5	--	ms
Twai	Time of starting to report point after waking	300	--	ms

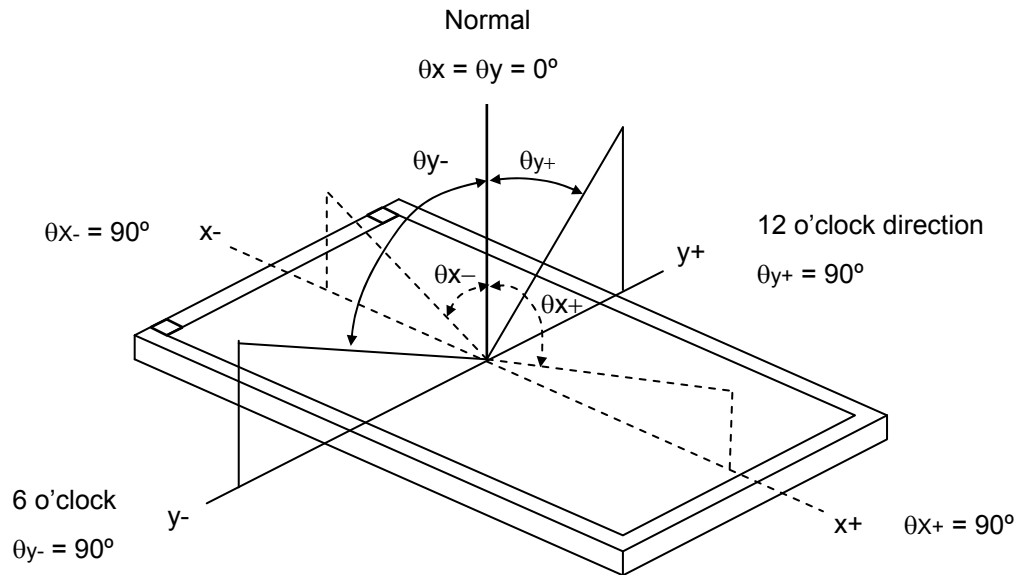
## 12. Optical Characteristics

The optical characteristics should be measured in a dark environment ( $\leq 1$  lux) or equivalent state with the methods shown in Note (4).

Item		Symbol	Conditions	Min.	Typ.	Max.	Unit	Note
Contrast Ratio		CR	$\theta_x=0^\circ, \theta_y=0^\circ$ Viewing Normal Angle	600	( 800 )	-	-	(2)
Response Time		$T_R$		-	10	20	ms	(3)
		$T_F$		-	15	30	ms	
Luminance(Center)		Y		440	( 490 )	-	cd/m <sup>2</sup>	(4)
Brightness uniformity		BUNI		75	( 80 )	-	%	(5)
Color Chromaticity	White	Wx		0.260	0.310	0.360	-	(1),(4)
		Wy		0.280	0.330	0.380	-	
	Red	Rx		0.550	0.600	0.650	-	
		Ry		0.290	0.340	0.390	-	
	Green	Gx		0.290	0.340	0.390	-	
		Gy	0.540	0.590	0.640	-		
	Blue	Bx	0.105	0.155	0.205	-		
		By	0.090	0.140	0.190	-		
Viewing Angle	Horizontal	$\theta_{x+}$	CR $\geq$ 10	75	( 85 )	-	deg.	
		$\theta_{x-}$		75	( 85 )	-		
	Vertical	$\theta_{y+}$		75	( 85 )	-		
		$\theta_{y-}$		75	( 85 )	-		



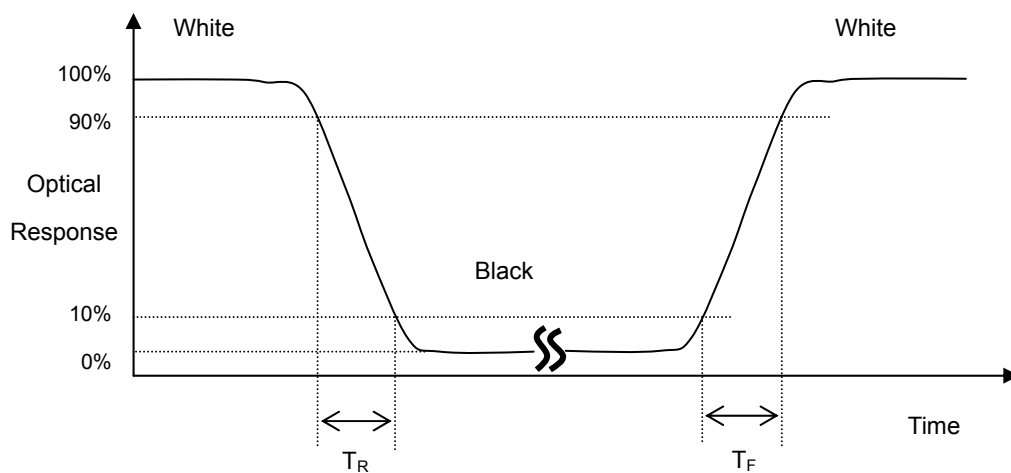
Note (1) Definition of Viewing Angle ( $\theta_x$ ,  $\theta_y$ ):



Note (2) Definition of Contrast Ratio (CR):

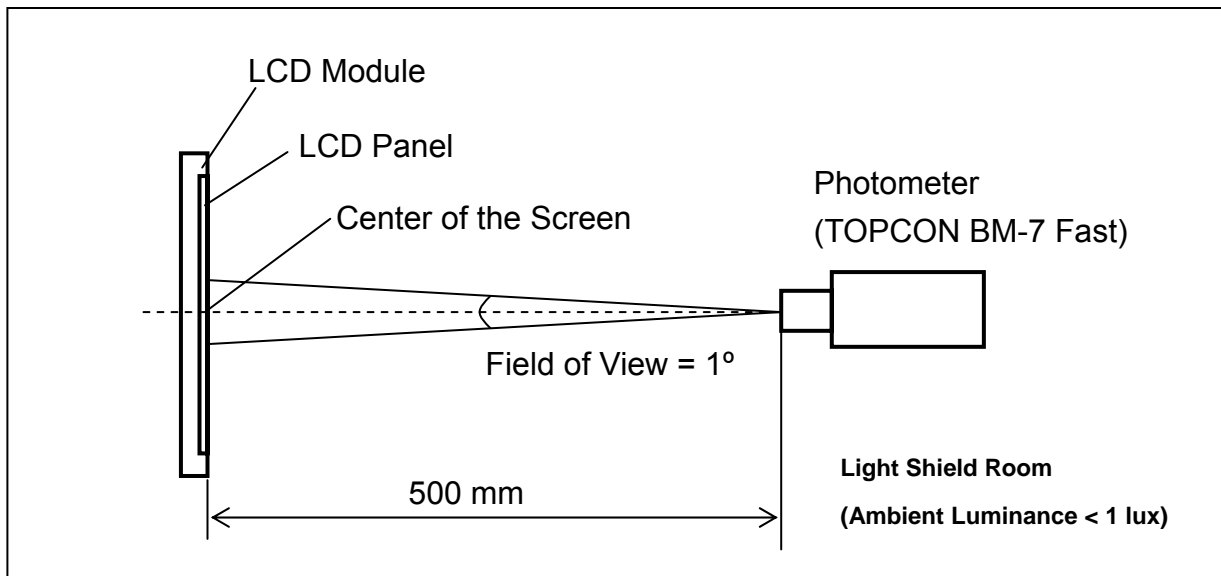
$$\text{Contrast ratio (CR)} = \frac{\text{Luminance measured when LCD on the "White" state}}{\text{Luminance measured when LCD on the "Black" state}}$$

Note (3) Definition of Response Time ( $T_R$ ,  $T_F$ ):



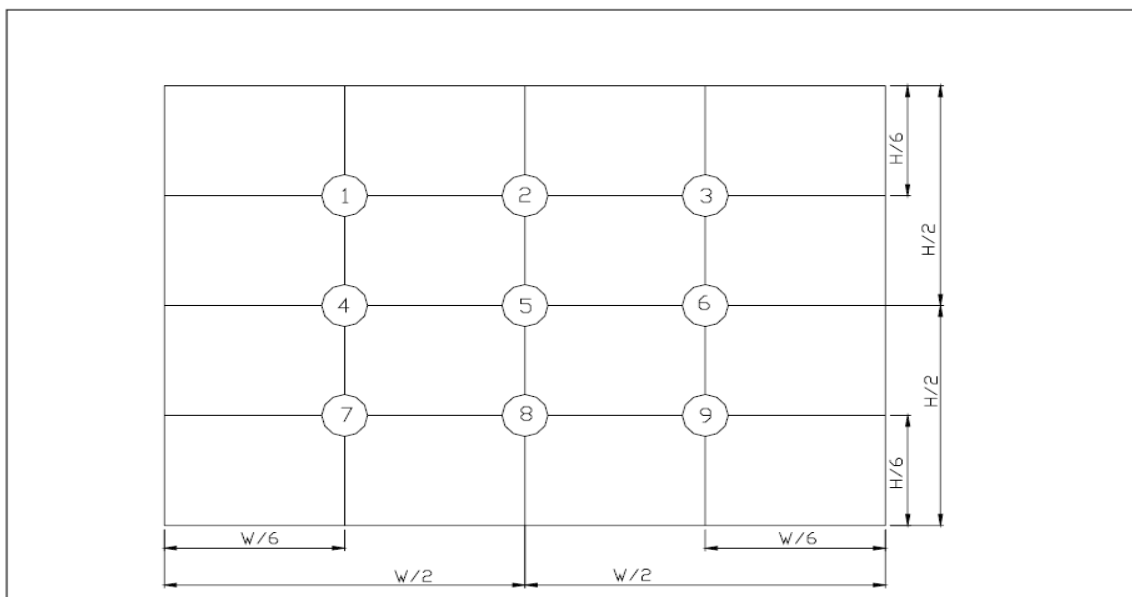
**Note (4) Measurement Set-Up:**

The LCD module should be stabilized at a given temperature for 30 minutes to avoid abrupt temperature change during measuring. In order to stabilize the luminance, the measurement should be executed after lighting Backlight for 30 minutes in a dark room or equivalent condition.



**Note (5) Definition of brightness uniformity**

Brightness uniformity=(Min Luminance of 9 points)/(Max Luminance of 9 points)×100%



( 單位 : mm )

<b>EVERVISION</b>	<b>MODEL NO.</b>		<b>PAGE</b>
	VGG128004-5TSLWH	SPEC SAMPLE	27

### 13. Reliability Test

No.	Test Items	Test Condition	Remark
1	High Temperature Storage Test	T <sub>a</sub> = 60°C 120 hours	(1),(3),(4)
2	Low Temperature Storage Test	T <sub>a</sub> = -20°C 120 hours	(1),(3),(4)
3	High Temperature Operation Test	T <sub>s</sub> = 50°C 120 hours	(2),(3),(4)
4	Low Temperature Operation Test	T <sub>a</sub> = 0°C 120 hours	(1),(3),(4)
5	High Temperature and High Humidity Operation Test	T <sub>a</sub> =40°C 90%RH 120 hours	(3),(4)
6	Electro Static Discharge Test (non-operating)	-Panel Surface/Top Case : 150pF, 330Ω Air: ±15kV, Contact: ±8kV	(3)
7	Mechanical Shock Test (non-operating)	Half sine wave, 100G, 6ms 3 times shock of each six surfaces	(3)
8	Vibration Test (non-operating)	Sine wave : 10 ~ 55 ~ 10Hz amplitude : 1.5mm 3 axis , 2 hours/axis	(3)
9	Thermal Shock Test (non-operating)	0°C (30min) ~ 50°C (30min), 10 cycles	(3),(4)
10	Drop Test(with Carton)	Height: 80cm 1 corner, 3 edges, 6 surfaces	(3)

Note 1 : T<sub>a</sub> is the ambient temperature of samples.

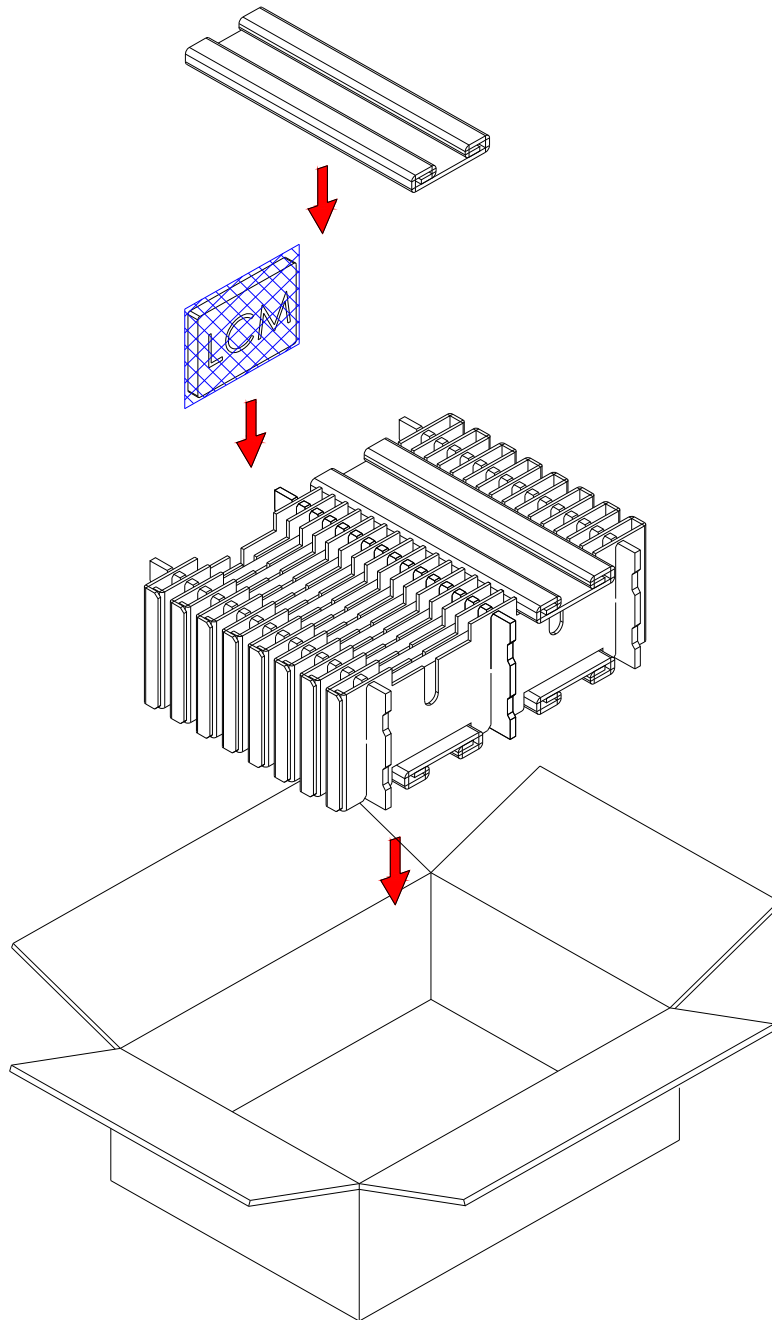
Note 2 : T<sub>s</sub> is the temperature of panel's surface.

Note 3 : In the standard condition, there shall be no practical problem that may affect the display function.

After the reliability test, the product only guarantees operation, but don't guarantee all of the cosmetic specification.

Note 4 : Before cosmetic and function test, the product must have enough recovery time, at least 2 hours at room temperature.

**14. Packaging**



**PARTS LIST**

	ITEM	SIZE(LxWxH) unit : mm	MATERIAL	Q.T.Y	NOTE
1	STATIC SHIEDING BAGS	245.0x300.0x0.09		30	
2	CARD BOARD	355.0x235.0x3.5	CARTON	3	
3	CARD BOARD	515.0x23.0x235.0	CARTON	8	
4	EXTERNAL BOX	520.0x355.0x241.0	CARTON	1	
5	PRODUCT	229.46x149.1x4.5		30	

<b>EVERVISION</b>	<b>MODEL NO.</b>		<b>PAGE</b>
	VGG128004-5TSLWH	SPEC SAMPLE	29

## **15. Precautions**

### **15.1 Assembly and Handling Precautions**

- (1) Do not apply rough force such as bending or twisting to the module during assembly.
- (2) It's recommended to assemble or to install a module into the user's system in clean working areas. The dust and oil may cause electrical short or worsen the polarizer.
- (3) Don't apply pressure or impulse to the module to prevent the damage of LCD panel and Backlight.
- (4) Always follow the correct power-on sequence when the LCD module is turned on. This can prevent the damage and latch-up of the CMOS LSI chips.
- (5) Do not plug in or pull out the I/F connector while the module is in operation.
- (6) Do not disassemble the module.
- (7) Use a soft dry cloth without chemicals for cleaning, because the surface of polarizer is very soft and easily scratched.
- (8) Moisture can easily penetrate into LCD module and may cause the damage during operation.
- (9) High temperature or humidity may deteriorate the performance of LCD module. Please store LCD module in the specified storage conditions.
- (10) When ambient temperature is lower than 10°C, the display quality might be reduced. For example, the response time will become slow.

### **15.2 Safety Precautions**

- (1) If the liquid crystal material leaks from the panel, it should be kept away from the eyes or mouth. In case of contact with hands, skin or clothes, it has to be washed away thoroughly with soap.
- (2) After the module's end of life, it is not harmful in case of normal operation and storage.

### **15.3 Terms of Warrant**

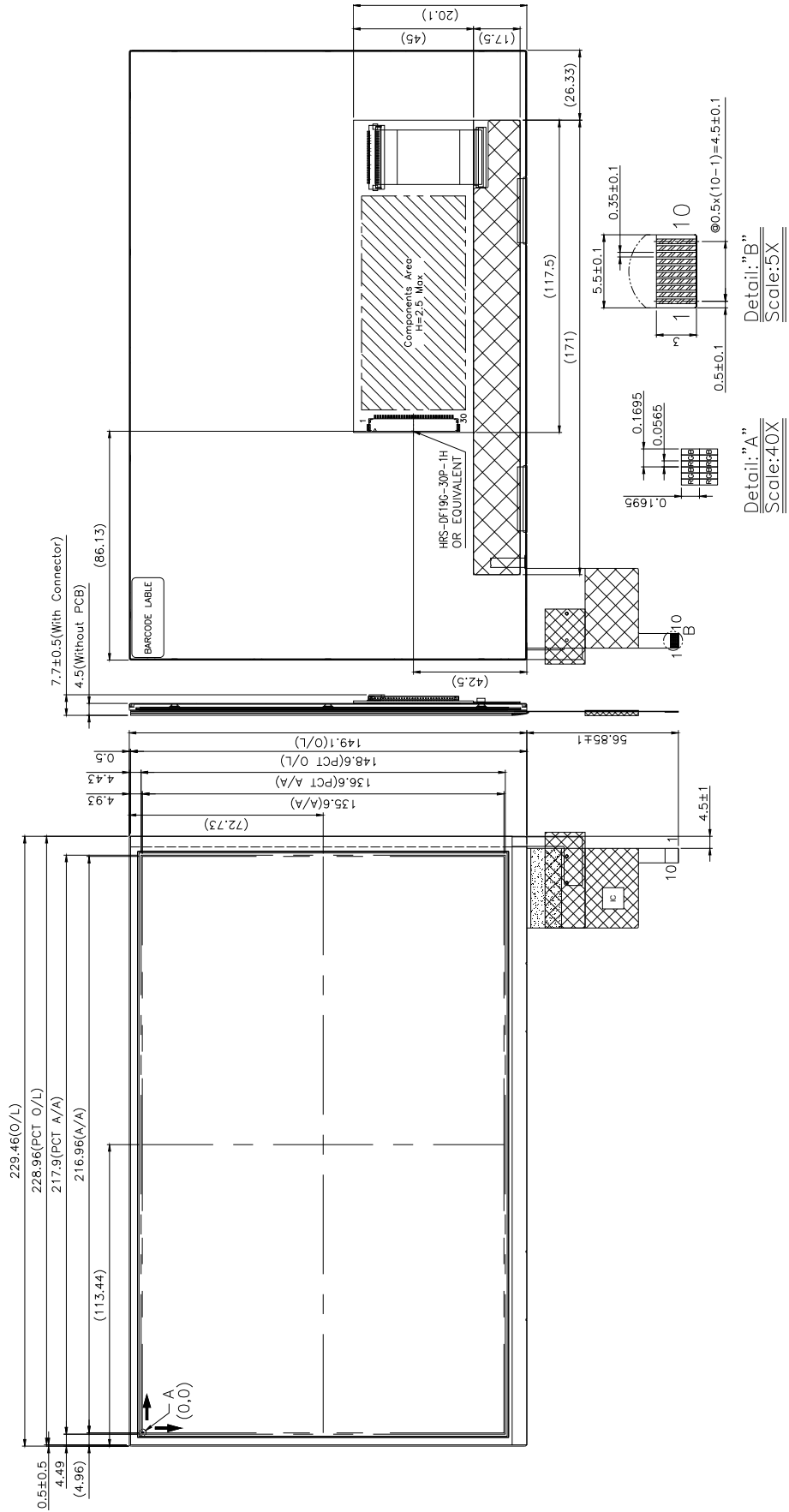
- (1) Acceptance inspection period  
The period is within one month after the arrival of contracted commodity at the buyer's factory site.
- (2) Applicable warrant period  
The period is within twelve months since the date of shipping out under normal using and storage conditions.

<b>EVERVISION</b>	<b>MODEL NO.</b>		<b>PAGE</b>
	VGG128004-5TSLWH	SPEC SAMPLE	30

#### **15.4 Caution**

This Evervision LCD module has been specifically designed for use only in electronic devices in the areas of audio control, office automation, industrial control, home appliances, etc. The modules should not be used in applications where module failure could result in physical harm or loss of life, and Evervision expressly disclaims any and all liability relating in any way to the use of the module in such applications.

**16.Outline Drawing**



<b>EVERVISION</b>	<b>MODEL NO.</b>		<b>PAGE</b>
	VGG128004-5TSLWH	SPEC SAMPLE	32

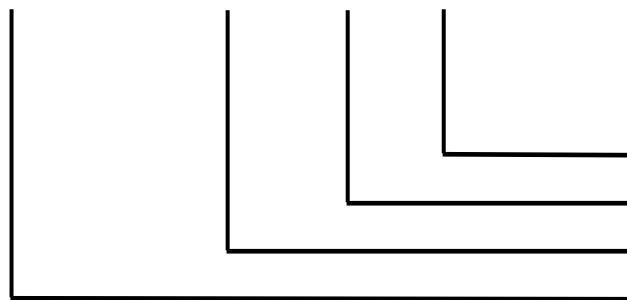
### 17. Definition of Labels

The bar code nameplate is pasted on each module as illustration, and its definitions are as following explanation.



- (a) Module Name : VGG128004-5TSLWH
- (b) Serial ID :

A B C D    E F G    H    IJKL



Serial No.  
Factory Code  
Manufactured Date  
Screen Size

Serial ID includes the information as below :

- (a) Screen size (Diagonal) : Inch Code (ABCD)  
3.5" → 0350  
10.4" → 1040
- (b) Manufactured Date : Year, Month, Day (EFG)

Year (E)

Year	2000	2001	2002	2003	2004	2005	2006	2007	2008	2009
Mark	0	1	2	3	4	5	6	7	8	9
Year	2010	2011	2012	2013	2014	2015	2016	2017	2018	2019
Mark	A	B	C	D	E	F	G	H	I	J



<b>EVERVISION</b>	<b>MODEL NO.</b>		<b>PAGE</b>
	VGG128004-5TSLWH	SPEC SAMPLE	33

Month (F)

Month	Jan.	Feb.	Mar.	Apr.	May	Jun.	Jul.	Aug.	Sep.	Oct.	Nov.	Dec.
Mark	1	2	3	4	5	6	7	8	9	A	B	C

Day (G)

Day	1	2	3	4	5	6	7	8	9	10	11	12	13	14	15	16
Mark	1	2	3	4	5	6	7	8	9	A	B	C	D	E	F	G
Day	17	18	19	20	21	22	23	24	25	26	27	28	29	30	31	
Mark	H	I	J	K	L	M	N	O	P	Q	R	S	T	U	V	

(c) Factory Code (H):

For EVERVISION internal use.

(d) Serial No. (IJKL):

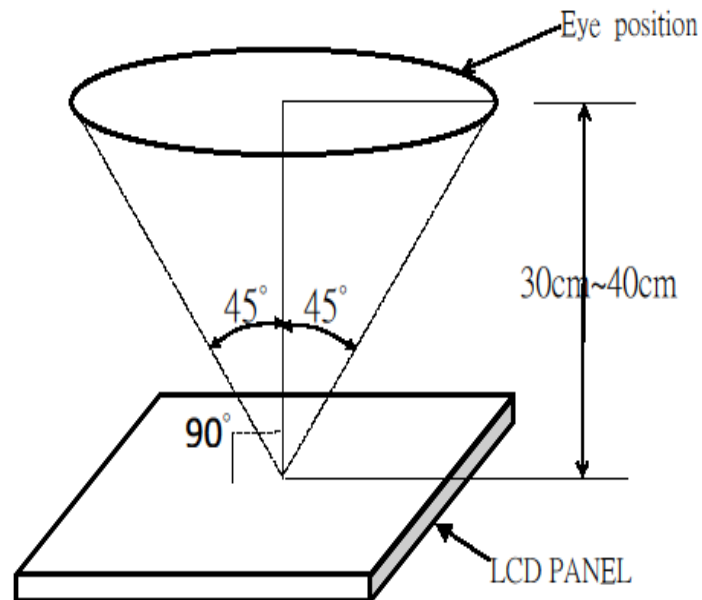
Manufacturing sequence of product, for example : 0001~9999.

## 18. Incoming Inspection Standards

### 18.1 The environmental condition of inspection

The environmental condition and visual inspection shall be conducted as below.

- (1) Ambient temperature  $25 \pm 5^{\circ}\text{C}$
- (2) Humidity: 45 ~ 65 % RH
- (3) Viewing distance is approximately 30~40 cm
- (4) Viewing angle is normal to the LCD panel as Fig \_1 ( $\pm 45^{\circ}$ )
- (5) Ambient Illumination: 300 ~ 500 Lux for external appearance inspection



Fig\_1

### 18.2 The defects classify of AQL as following:

- (1) Test method: According to ANSI/ASQC Z 1.4 .General Inspection Level II take a single time
- (2) The defects classify of AQL as following:

Class of defects	AQL	Definition
Major	0.65%	It is defect that is likely to result in failure or to reduce materially the usability of the intended function.
Minor	1.5%	It is a defect that will not result in functioning problem with deviation classified.

**18.3 Inspection Parameters**

Item		Specification/Description			Note
Display	Function	No Display			-
		Malfunction			-
Operating	Contrast ratio	Out of Spec			-
	Line defect	No obvious Vertical and Horizontal line defect in bright , dark and colored.			-
	Point Defect (red ,green , blue, dark , white)	Item		Acceptable number	Note: 1、4、5
		BRIGHT DOT	Random	$N \leq 3$	
			2 dots adjacent	$N \leq 0$	
			3 dots adjacent	$N \leq 0$	
		Distance	Minimum Distance Between Bright Dots	5mm	
		DARK DOT	Random	$N \leq 4$	
			2 dots adjacent	$N \leq 0$	
			3 dots adjacent	$N \leq 0$	
TOTAL DOT		$N \leq 6$			
Distance	Minimum Distance Between Dark AND Bright Dots Minimum Distance Between Dark Dots	5mm			
External Inspection (non-operating or operating)	Scratch (in display area)	L(mm)	W(mm)	Acceptable number	Note:2
		-	$W \leq 0.07$	Disregard	
		$L \leq 5.0$	$0.07 < W \leq 0.1$	4	
	Polarizer dent or bubble (in display area)	Dimension(mm)		Acceptable number	Note:3
		$D \leq 0.3$		Disregard	
		$0.3 < D \leq 0.5$		4	
	Line Shape (Particles and Lint in display area)	L(mm)	W(mm)	Acceptable number	Note:2
		-	$W \leq 0.07$	Disregard	
		$L \leq 5$	$0.07 < W \leq 0.1$	4	
	Dot Shape (Particle in Display area)	Dimension(mm)		Acceptable number	Note:3
		$D \leq 0.3$		Disregard	
		$0.3 < D \leq 0.5$		4	

**Incoming Inspection Touch Panel**

Circular Defects  
 Linear Defects  
 Scratch  
 Air Bubble  
 Crack

Y:  
 Long breakage

Z:  
 Wide breakage

D:  
 thickness  
 breakage

T:  
 single piece of  
 glass thickness  
 (Touch sensor  
 single thickness)

VA:  
 Touch control  
 panel viewing  
 area.

Sensor wide:  
 the size of the  
 long side of the  
 touch panel.

(1) Circular Defects

$\phi = (L+W)/2$

Diameter(mm)	Spec
$\phi \leq 0.25$	No quantity limit
$0.25 < \phi \leq 0.5$	Max 5 defect
$0.5 < \phi$	Reject

(2) Linear Defects



Length	Width	Acceptable
$12.0 \geq L$	$0.06 \geq W$	Accept
$12.0 \geq L$	$0.08 \geq W$	Max 5 defect
$L > 12.0$	$W > 0.08$	Reject

The Min distance of defects must be above 15.0mm.

(3) Scratch

Length	Width	Acceptable
$12.0 \geq L$	$0.06 \geq W$	Accept
$12.0 \geq L$	$0.08 \geq W$	Max 5 defect
$L > 12.0$	$W > 0.08$	Reject

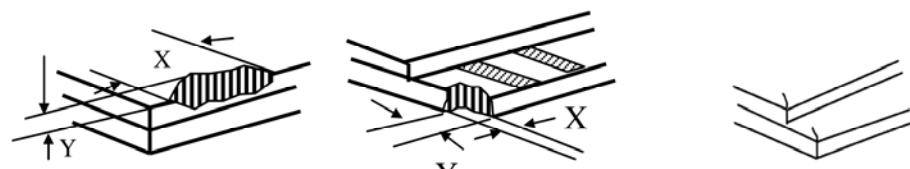
The Min distance of defects must be above 15.0mm.

(4) Air Bubble

Diameter(mm)	Spec
$\phi \leq 0.2$	No quantity limit
$0.2 < \phi \leq 0.6$	Max 5 defect

The Min distance of defects must be above 10.0mm.

(5) Crack



$Z \leq T, X \leq 1/8$  Sensor wide

$X \leq 3\text{mm}$  and  $Y \leq 1/3D$

Y: Did not enter the VA

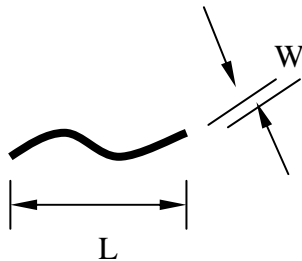
(Accept)

(Accept)

(Reject)

Note1. The definition of dot defect : The dot defect was judged after repair and the size of a defective dot over 1/2 of whole dot is regarded as one defective dot.

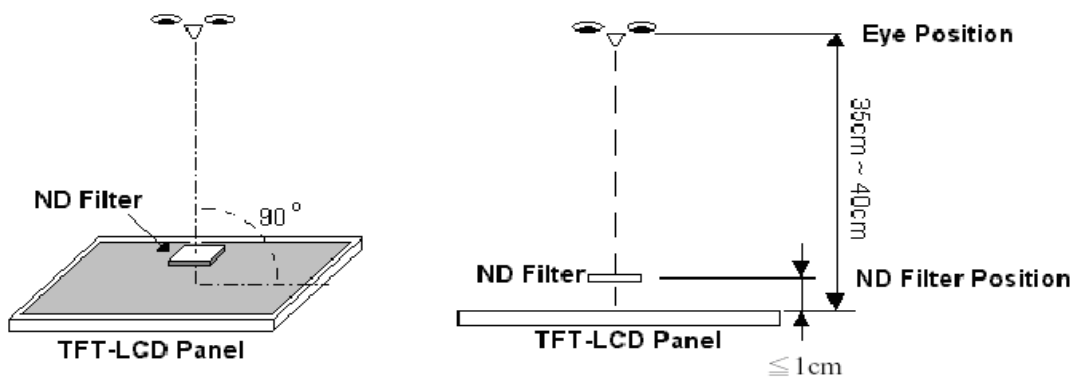
Note2.



Note3. D : Diameter  $D=(a+b)/2$



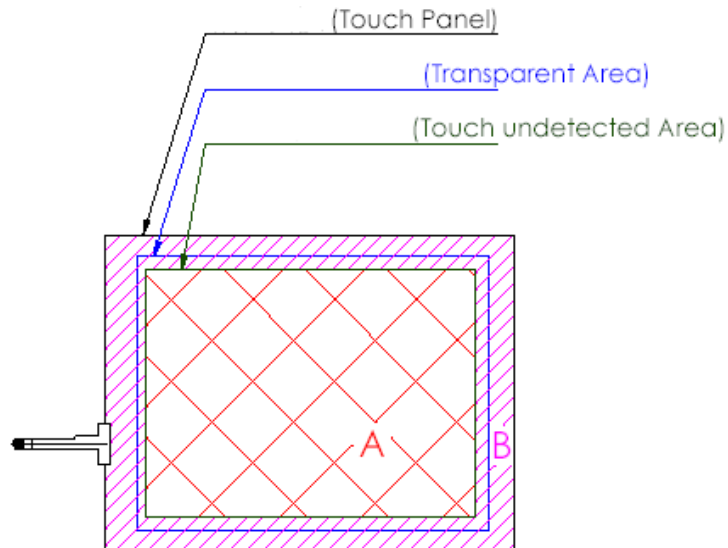
Note4. Bright dot is defined through 2% transmission ND Filter as following.



Note5. ADJACENT DOT



Note6.



A area : Without any defect point effect on normal operation.

B area : None-specify

#### 18.4 Handling of LCM

- (1) Don't give external shock.
- (2) Don't apply excessive force on the surface.
- (3) Liquid in LCD is hazardous substance. Must not lick and swallow. when the liquid is attach to your hand, skin, cloth etc. Wash it out thoroughly and immediately.
- (4) Don't operate it above the absolute maximum rating.
- (5) Don't disassemble the LCM.