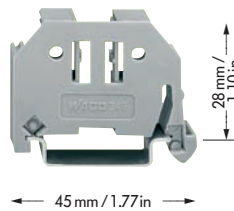
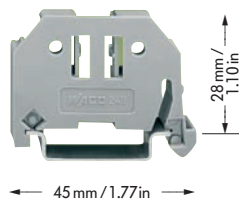


# End Stop for DIN 35 Rail

End stop for DIN 35 rail, End stop width 6 mm / 0.236 in	End stop for DIN 35 rail, End stop width 10 mm / 0.394 in	
-------------------------------------------------------------	--------------------------------------------------------------	--



Item No.	Pack.-unit pcs	Item No.	Pack.-unit pcs
<b>End stop, for DIN 35 rail</b> 6 mm / 0.236 in wide		<b>End stop, for DIN 35 rail</b> 10 mm / 0.394 in wide	
<b>249-116</b>	100 (4 x 25)	<b>249-117</b>	50 (2 x 25)

## Application notes

Fit – and forget! Assembling the new WAGO screwless end stop is as simple and quick as snapping a WAGO rail-mounted terminal block onto the rail.

**Without any tools!**

This way rail-mounted terminal blocks are safely secured, at low cost, against any movement on all carrier rails DIN 35 acc. to DIN EN 50022 (35 x 7.5 mm; 35 x 15 mm).

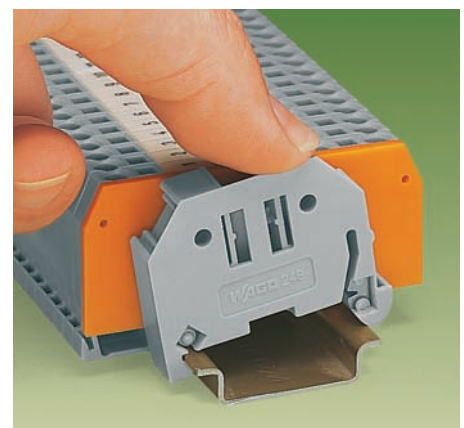
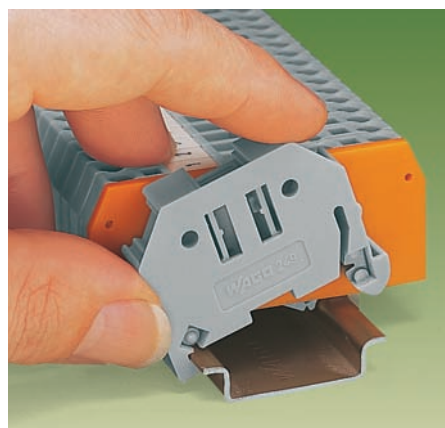
**Entirely without screws!**

The “secret” of the excellent tight fit lies in the two small clamping plates which keep the end stop in position, even if the rails are mounted vertically.

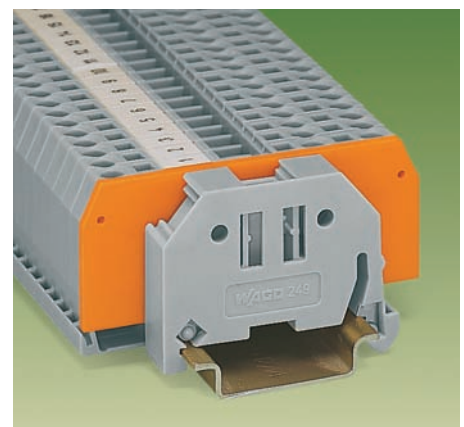
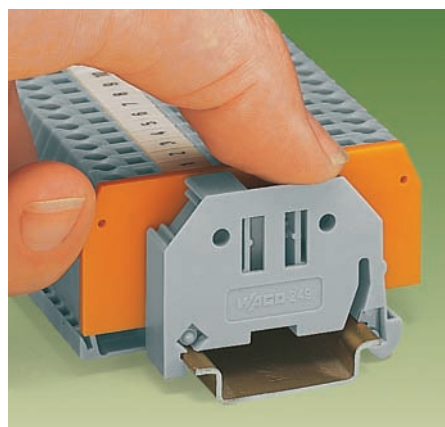
**Simply snap on and forget!**

In addition, costs are considerably reduced when using large numbers of end stops.

A further advantage is that three marker receptacles for all WAGO marker systems for rail-mounted terminal blocks and a snap-in hole for WAGO adjustable height group marker carriers offer individual marking possibilities.



Snap on . . .



. . . that's it!