

# Technical data sheet

## Concealed connection box

Art.-Nr. 2003112



Connection box for clamping terminals, with cover and cover screw (15 mm), the cover edge is flat, surface is roughened, in conjunction with the cover and cover screws, the connection sockets achieve the VDE test mark to VDE 0606 and are flame-resistant to VDE 0471/DIN 695 Part 2-1, testing temperature 750 °C, protection rating IP20.



**PS** Polystyrene

### Master data

Item no.	2003112
Type	UV 80 K
Description 1	Hollow wall, connection box
Description 2	concealed
Dimension	80x80x45
Colour	Black
Material	Polystyrene
Material symbol	PS
Smallest sales unit	50,00 Piece
Weight	4,50 kg/100 pc.

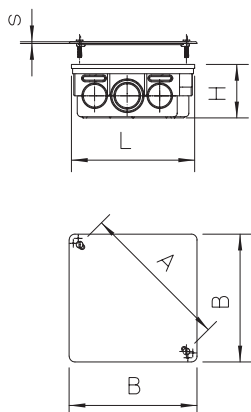
# Technical data sheet

## Concealed connection box

Art.-Nr. 2003112



### Technical data



Width	80,00 mm
Height	45,00 mm
Length	80,00 mm
Dimension A	102,00 mm
Dimension B	97,00 mm
Dimension H	45,00 mm
Dimension L	85,00 mm
Closable	<input type="checkbox"/>
No. of entries	12,00
Entries	10
Type of entry	Break-out openings for cables and pipes 6 x Ø 19 mm and 4 x Ø 21.5 mm
Type of housing penetration	Pre-marking
Version for	Single
Shape	Connection socket/box
Equipment	Without
Cover	Not transparent
Cover fastening	Screwed
Entry from rear	<input type="checkbox"/>
Flame resistant	Flame resistant to VDE 0471/DIN 695 Part 2-1, test temperature 650 °C
Shape	Square
For pipe diameter	16/19 mm
Function maintenance (ETIM)	Without
Floor height	47 mm
Halogen-free	<input type="checkbox"/>
With screening	<input type="checkbox"/>
With nail strap	<input type="checkbox"/>
With bolts	<input type="checkbox"/>
Mounting type	Concealed
Nominal cross section	4,00 mm <sup>2</sup>
Nominal voltage	400,00 V
Sealable	<input type="checkbox"/>
Impact-resistant	<input checked="" type="checkbox"/>
Protection rating	IP20
Support	Without
Wind-tight	<input type="checkbox"/>