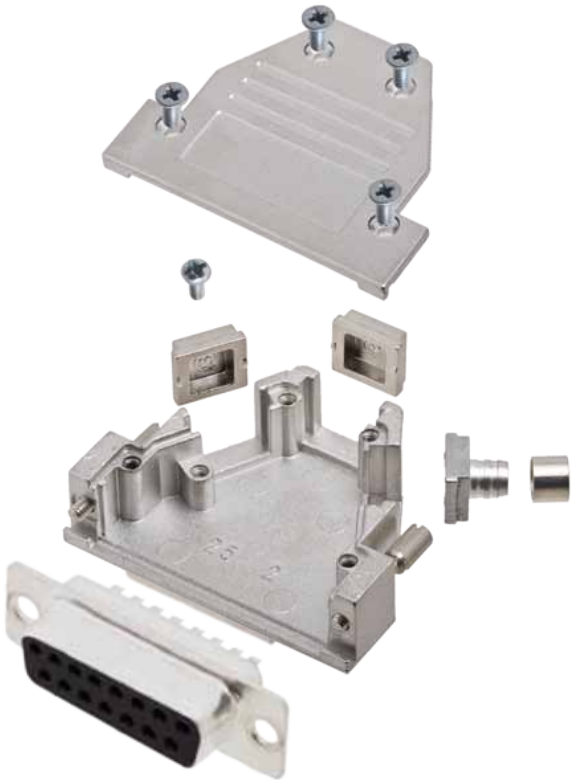


DCRP + D-Sub Connector Kit



NEW



TECHNICAL SPECIFICATIONS
D-Sub Hood:

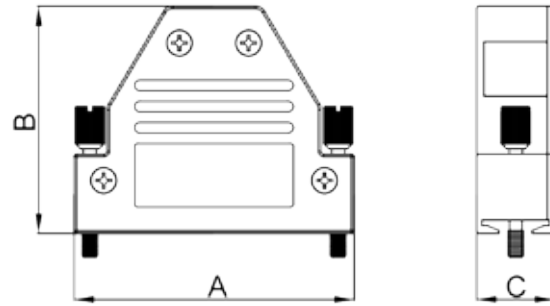
Material: Zink, Nickel Plated
 Operating Temperature: -40°C to +120°C
 Cable Entry: 9 way Top Entry Only
 15 way Top Entry Only
 25 way Side - Top - Side

Strain relief: Crimping Flange 6,5 - 7,5 mm
 Crimping Sleeve 8,0 - 9,0 mm
 - Other options on crimping flange and sleeve on request

Thumbscrews: UNC 4-40

Features:

- 360° EMI shielding
- Crimping Flange
- Supports all types of cables
- Supports all types of D-Sub
- Available in sizes 9 - 15 - 25
- Crimping Flange 3,0 - 10,0 mm
- Crimping Sleeve 5,0 - 17,0 mm



D-Sub-Hood

Size DCRP	Dim A	Dim B	Dim C
9-way	32,2	42,0	15,0
15-way	40,8	42,3	15,0
25-way	54,0	42,3	15,0

Male D-Sub Solder Cup:

Insulator: PBT, Black, UL94 V-0
 Shell: Steel, Tin Plated
 Contact pins: Copper Alloy
 Stamped & Formed Pins Class 3, 100 inserts min.
 Machined Contact Pins: Class 1, 500 inserts min.
 Contact Plating: Selective Gold over Nickel
 Operating Temperature: -55°C to +105°C
 Withstanding voltage: 1000V for 1 minute
 Insulator resistance: 1000MΩ min.

Female D-Sub Solder Cup:

Insulator: PBT, Black, UL94 V-0
 Shell: Steel, Tin Plated
 Contact pins: Copper Alloy
 Stamped & Formed Pins Class 3, 100 inserts min.
 Machined Contact Pins: Class 1, 500 inserts min.
 Contact Plating: Selective Gold over Nickel
 Operating Temperature: -55°C to +105°C
 Withstanding voltage: 1000V for 1 minute
 Insulator resistance: 1000MΩ min.


Ordering information:
Class 3 Sub-D Connector Kits (100 inserts min.)

Size:	P/N - Kitted:	Product Code - MALE Conn. Kit
9-way	6355-0881-01	DCRP09-DBP-CF65-CS80-K
15-way	6355-0881-02	DCRP15-DBP-CF65-CS80-K
25-way	6355-0881-03	DCRP25-DBP-CF65-CS80-K

Size:	P/N - Kitted:	Product Code - FEMALE Conn. Kit
9-way	6355-0881-11	DCRP09-DBS-CF65-CS80-K
15-way	6355-0881-12	DCRP15-DBS-CF65-CS80-K
25-way	6355-0881-13	DCRP25-DBS-CF65-CS80-K

Ordering information:
Class 1 Sub-D Connector Kits (500 inserts min.)

Size:	P/N - Kitted:	Product Code - MALE Conn. Kit
9-way	6355-0881-21	DCRP09-DMP-CF65-CS80-K
15-way	6355-0881-22	DCRP15-DMP-CF65-CS80-K
25-way	6355-0881-23	DCRP25-DMP-CF65-CS80-K

Size:	P/N - Kitted:	Product Code - FEMALE Conn. Kit
9-way	6355-0881-31	DCRP09-DMS-CF65-CS80-K
15-way	6355-0881-32	DCRP15-DMS-CF65-CS80-K
25-way	6355-0881-33	DCRP25-DMS-CF65-CS80-K

D-Sub High Density:

Insulator:	PBT, Black, UL94 V-0
Shell:	Stamped Steel, Tin Plated
Contact pins:	Copper Alloy
Stamped & Formed pins:	100 inserts min
Contacts Plating:	Selective Gold over Nickel
Operating Temperature:	-55°C to +105°C
Withstanding voltage:	500V for 1 minute
Insulator resistance:	500MΩ min


Ordering information:
D-Sub Connector Kits (100 inserts min.)

Size:	P/N - Kitted:	Product Code - MALE Conn. Kit
9-way	6355-0882-01	DCRP09-HDP15-CF65-CS80-K
15-way	6355-0882-02	DCRP15-HDP26-CF65-CS80-K
25-way	6355-0882-03	DCRP25-HDP44-CF65-CS80-K

Size:	P/N - Kitted:	Product Code - FEMALE Conn. Kit
9-way	6355-0882-11	DCRP09-HDS15-CF65-CS80-K
15-way	6355-0882-12	DCRP15-HDS26-CF65-CS80-K
25-way	6355-0882-13	DCRP25-HDS44-CF65-CS80-K

D-Sub Crimp:

Insulator:	PBT, Black, UL94 V-0
Shell:	Stamped Steel, Tin Plated
Contact pins:	Copper Alloy
Machined pins Class 2:	200 inserts min
Contacts Plating:	Hard Gold over Nickel
Operating Temperature:	-55°C to +125°C
Test voltage:	1000V
Insulator resistance:	<5GΩ
Crimp Area (AWG):	AWG 24-20 0.2 - 0.6mm ²


Ordering information:
Class 3 Sub-D Connector Kits (100 inserts min.)

Size:	P/N - Kitted:	Product Code - MALE Conn. Kit
9-way	6355-0883-01	DCRP09-DBCP-CF65-CS80-K
15-way	6355-0883-02	DCRP15-DBCP-CF65-CS80-K
25-way	6355-0883-03	DCRP25-DBCP-CF65-CS80-K

Size:	P/N - Kitted:	Product Code - FEMALE Conn. Kit
9-way	6355-0883-11	DCRP09-DBCS-CF65-CS80-K
15-way	6355-0883-12	DCRP15-DBCS-CF65-CS80-K
25-way	6355-0883-13	DCRP25-DBCS-CF65-CS80-K



Encitech Connectors AB
Rörkullsvägen 4
SE-302 41 HALMSTAD
Sweden

Tel: +46-35-15 13 90
Fax: +46-35-15 13 99
e-mail: connectors@encitech.com
web: www.encitech.com

www.encitech.com