

Utility Applications to BS88

J Type Fuse Links to BS88: Part 5 Slotted/Non Slotted Types 415V / 20 - 800A

Specifications

Description: Slotted type fuses designed for use with wedge type fuse carriers on BS applications



Ratings:

- Volts: - 415V
- Amps: - 20 - 630A (Slotted Type)
- 800A (Non Slotted Type)
- IR - 80kA @ 415V

Applications: For use by Electrical Authorities in distribution pillars, open type substation boards, heavy duty cut-outs, and underground connection boxes.

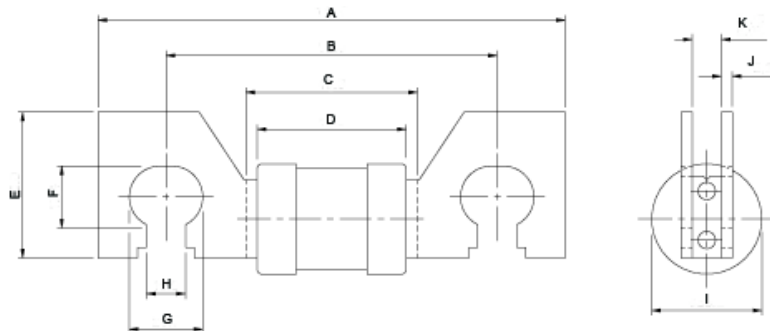
Agency information: ASTA certified and tested BS88: Part 5

RoHS Compliant

Dimensions

Type	A	B	C	D	E	F	G	H	I	J	K
MJ30-8	110	82	45.2	40.5	30	14.8	17.5	9.8	30.9	2.4	6.45/6.53
MJ30-7 (Up to 200A)	110	82	45.2	40.5	30	14.8	17.5	9.8	30.9	2.4	6.45/6.53
MJ30-7 (315-400A)	110	82	44.8	40	30	14.4	17.5	9.8	38	2.4	6.45/6.53
MJ31-7 (Up to 200A)	131	92	46.8	40.5	41	17.4	20.7	10.9	30.8	3.2	8.05/8.73
MJ31-7 (315-400A)	131	92	46.4	40	41	17.4	20.7	10.2	38.1	3.2	8.05/8.73
PJ30-7	110	82	44.8	40	30	14.4	17.5	9.8	38	2.4	6.45/6.53
PJ31-7	131	92	46.4	40	41	17.4	20.7	10.2	38.1	3.2	8.05/8.73
RJ31-7	131	92		45	38	16.5	15.5	10.9	49.1	3.2	8.05/8.73
SJ31-6	128.5	92		44.5	38.1	16.5	20.6	11	73.3	3.2	8.05/8.73
SJ28	128.5	92		44.5	38.1	16.5	20.5		73.3	3.2	8.05/8.73

Slotted Type (MJ31-7 up to 200A)



Data Sheets: MJ30-8: 4178A / MJ30-7: 4178B / MJ31-7 or 8: 4180 / PJ31: 4181 / RJ: 4182 / SJ: 4183

Catalogue Numbers

Rating (A)	Slotted Fixing Center			Non Slotted	Unit Packing
	76mm	82mm	92mm		
20	-	-	20MJ31-8	-	10
25	-	-	25MJ31-8	-	
32	-	32MJ30-8	32MJ31-8	-	
40	-	40MJ30-8	40MJ31-8	-	
50	-	50MJ30-8	50MJ31-8	-	
63	63MJ29-6	63MJ30-8	63MJ31-8	-	
80	80MJ29-6	80MJ30-7	80MJ31-7	-	
100	100MJ29-6	100MJ30-7	100MJ31-7	-	
125	-	125MJ30-7	125MJ31-7	-	
160	160MJ29-6	160MJ30-7	160MJ31-7	-	
200	200MJ29-6	200MJ30-7	200MJ31-7	-	
250	250MJ29-6	250MJ30-7	250MJ31-7	-	
315	-	315MJ30-7	315MJ31-7	-	
355	-	355PJ30-7	355PJ31-7	-	
400	-	400PJ30-7	400PJ31-7	-	
450	-	-	450RJ31-7	-	
500	-	-	500RJ31-7	-	
560	-	-	560SJ31-6	-	
630	-	-	630SJ31-6	-	
800	-	-	-	800SJ28	