

Industrial & Motor Applications to BS88

Centre Bolted Tags
415 - 550V ac / 2 - 1250A
250V dc

Specifications

Description: Fuse Links for general industrial applications with Q1 fusing factor - general purpose (gG) and motor protection (gM) characteristics

Applications: General Industrial & Motors applications

Ratings:

- Volts: - 415 - 550V ac / 250V dc
- Amps: - 2 - 1250A
- IR - 40kA @ 250V dc
- 80kA @ 415 / 550V ac

Agency information: Meets BS88: Part 1 & 2 (1988), IEC 269: Parts 1 (1986)

RoHS Compliant

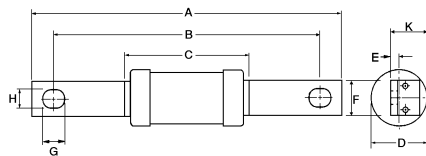
AC / BC
550V ac / 2 - 63A
250 V dc (except gM)



Catalogue Numbers

Type	Rating (A)	Catalogue Number	Class	Fixing Centres mm	Unit Packing
AC	2	AC2	gG	97.5	20
	4	AC4			
	6	AC6			
	10	AC10			
	16	AC16			
	20	AC20			
	25	AC25			
BC	32	AC32	gG	97.5	20
	40	BC40			
	50	BC50			
	63	BC63			
	63M80	BC63M80			
	63M100	BC63M100	gM		

Dimensions



AD / BD / CD / DD / ED
550V ac / 2 - 400A
415V ac (Types gM, DD, ED)
250 V dc (Types AD, BD)



Catalogue Numbers

Type	Rating (A)	Catalogue Number	Class	Ref BS	Fixing Centres mm	Unit Packing
AD	2	AD2	gG	N/A	111	20
	4	AD4				
	6	AD6				
	10	AD10				
	16	AD16				
	20	AD20				
	25	AD25				
BD	32	AD32	gG	N/A	111	20
	40	BD40				
	50	BD50				
CD	63	BD63	gG	B1	111	10
	80	CD80				
	100	CD100				
	100M125	CD100M125				
	100M160	CD100M160				
DD	100M200	CD100M200	gM	B2	111	5
	125	DD125				
	160	DD160				
	200	DD200				
ED	200M250	DD200M250	gG	B3/B4	111	1
	200M315	DD200M315				
	250	ED250				
	315	ED315				
	355	ED355				
ED	400	ED400	gM	B3/B4	111	1
	315M400	ED315M400				
	400M500	ED400M500*				

*-550V ac

Part No	Dimensions								
	A	B	C	D	E	F	G	H	K
AC	113.5	97.5	55.5	21.0	1.6	12.7	13.5	7.0	11.2
AD	128.5	111	55.0	21.0	1.4	14.2	11.8	8.7	11.2
BC	113.5	97.5	55.0	21.0	1.6	7.0	13.5	12.7	11.2
BC63M									
BD	128.5	111	55.0	21.0	1.4	14.2	11.8	8.7	11.2
CD	126	111	58.5	21.0	3.2	14.3	11.1	8.7	19.5
CD100M125 & CD100M160				26.0					22.0
CD100M200				31.0					2.5
DD	136	111	47.0	31.0	3.2	19.0	12.5	9.0	22.5
DD200M									
ED250	136	111	47.0	31.0	4.7	19.0	12.5	9.0	22.5
ED315			50.0	38.0		31.0			
ED315M400.0			75.0	59.0		31.0			
ED400M500									

Data Sheets: AC: 4110 / BC: 4113 / AD: 4111 / BD: 4114 / CD: 4116 / DD: 4118 / ED: 4119