

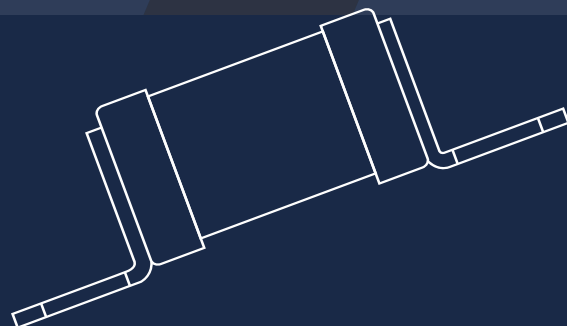
FRSI 弗而兹电气

PRODUCTS DATASHEET

FRG系列LB型 AC690~1000V

凳子脚快速熔断器

产品规格书



1. 规格型号

1.1 额定电压：AC690/1000V

1.2 功能等级：aR

1.3 分断能力：AC = 100kA

2. 符合标准及规范：IEC60269-4 GB/T13539.4

3. 产品外形尺寸

Class:aR

产品型号	额定电压 (V)	额定电流 (A)	尺寸(mm)							图
			A	B	C	D	G	H	J	
FRG18LB64	AC690/700/ 1000V	20~125	2	18.2	19	76	62	6.5	9	图1
FRG21LB70		60~160	2.5	21.3	22	90	70	9	11	
FRG24LB77		125~200	3	23	25.5	98	77	9	14	
FRG27LB70		90~225	3	26.8	28	90	70	9	11	
FRG36LB81		150~355	3	33	36	106	81	11	19	
FRG48LB85		315~600	3.5	47.5	51	109	85	11	16	
FRG38LB85	AC690/1000V	180~350	3	38	44	113	85	11	19	

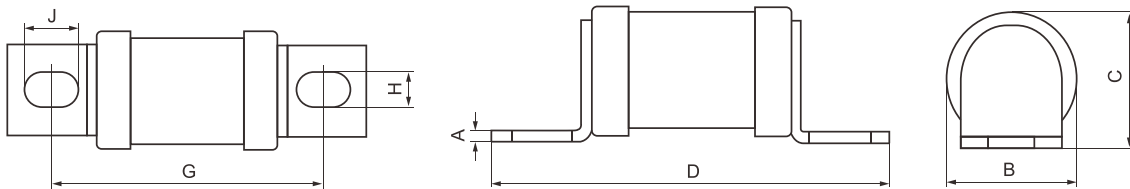
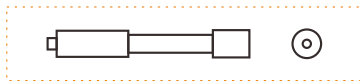


图1



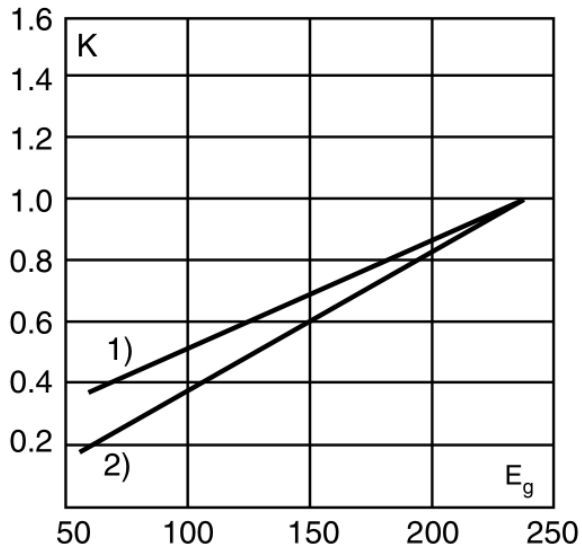
注：如有要求带信号(远程控制)请注明，并向销售部或技术部取得联系
 Note: If you require signal (remote control), please specify and contact the Sales Department or Technical Department.

4. 产品技术参数

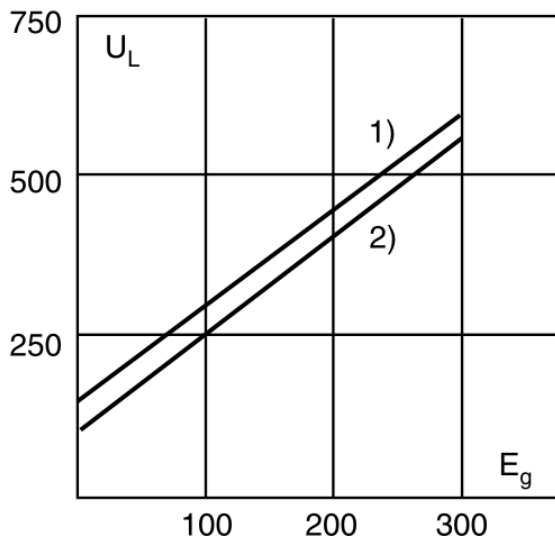
4.1 弧前 I^2t 熔断 I^2t 额定功率

产品型号	尺码	电流 (A)	$I^2t(A^2S)$		功耗 (W)	曲线图
			弧前	熔断		
FRG18LB64	18	25	25	150	7	图1 图2 图3
		32	32	190	10	
		35	52	310	11	
		40	100	600	12	
		45	105	680	13	
		50	120	780	14	
		56	135	950	15	
		63	170	1200	16	
		80	360	2500	18	
		100	500	3500	21	
		125	650	4500	25	
FRG21LB70	21	60	200	800	16	图1 图2 图3
		80	250	900	18	
		100	360	1300	21	
		125	540	1900	27	
		140	850	2500	35	
		160	1000	3700	39	
FRG24LB77	24	125	540	1900	27	图1 图2 图3
		140	850	2500	35	
		160	1000	3700	39	
		180	1400	5300	46	
		200	1900	7100	52	
FRG27LB70	27	90	250	900	19	图1 图2 图3
		100	360	1300	21	
		125	540	1900	27	
		140	850	2500	36	
		160	1000	3700	40	
		180	1400	5300	46	
		200	1900	7100	52	
		225	3700	10500	55	
FRG36LB81	36	150	2100	14000	35	图1 图2 图3
		160	2400	15000	36	
		180	3800	25000	38	
		200	6000	40000	40	
		225	8500	60000	44	
		250	11500	80000	46	
		280	16500	100000	48	
		315	19000	125000	53	
		355	22000	160000	55	
		FRG38LB85	38	180	3800	
200	6000	40000		40		
225	8500	60000		44		
250	11500	80000		46		
280	16500	100000		48		
315	19000	125000		53		
355	22000	160000		55		
FRG48LB85	48	315	8600	62000	51	图1 图2 图3
		350	13500	97000	54	
		400	21000	150000	60	

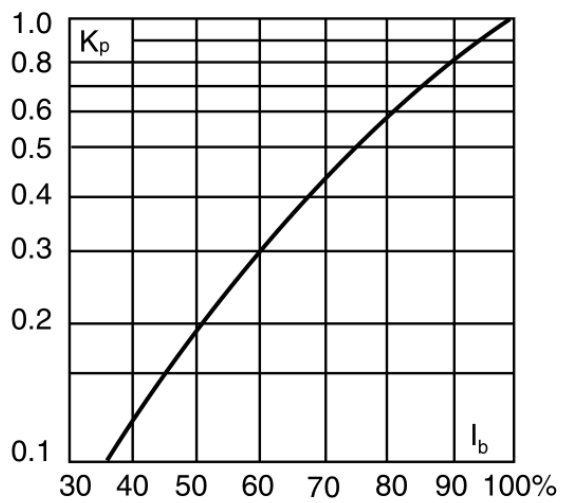
4.2 熔断 I^2t 修正系数K



4.3 电弧电压峰值



4.4 功耗修正系数 K_p



4.5 时间电流曲线图

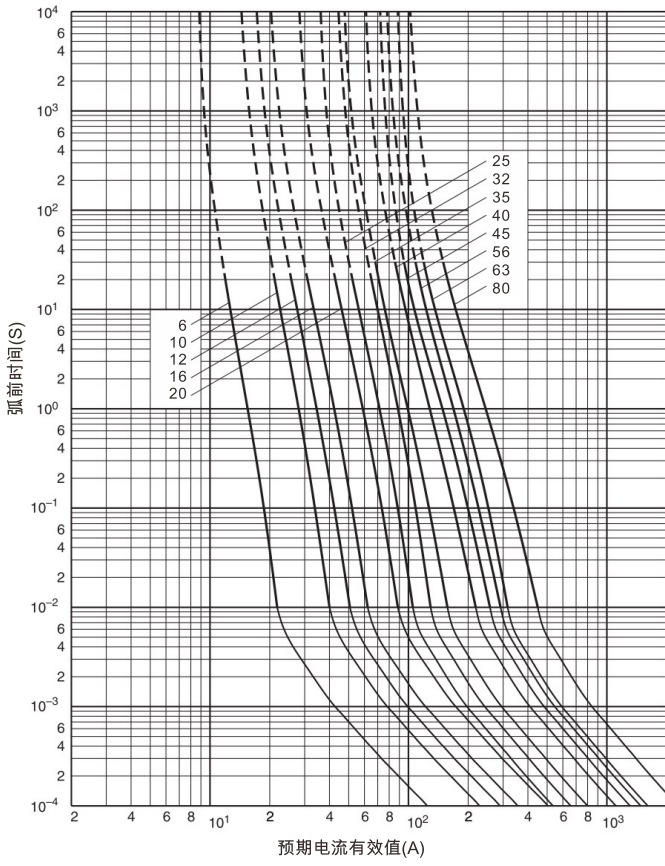


图1

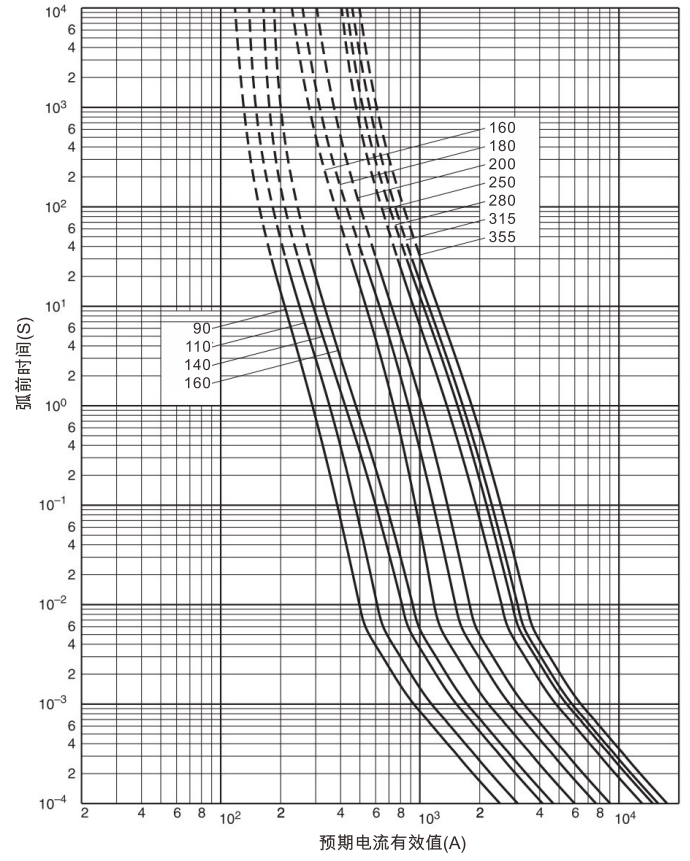


图2

4.6 截断电流特性曲线

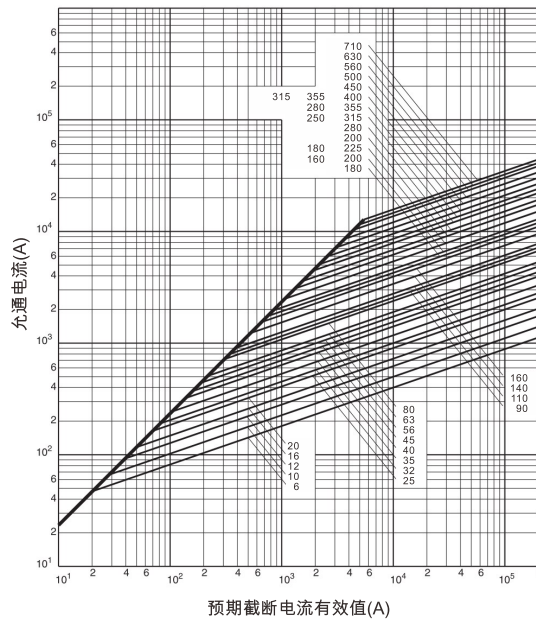


图3