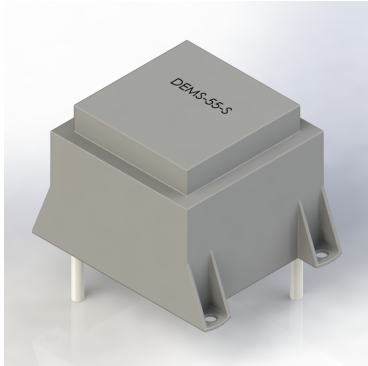


DEMS - SUPER MSS INDUCTORS



APPLICATIONS:

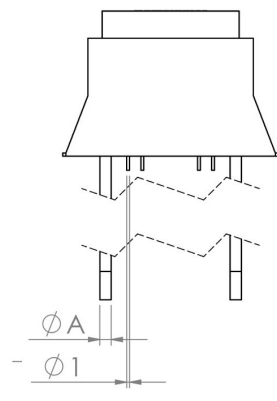
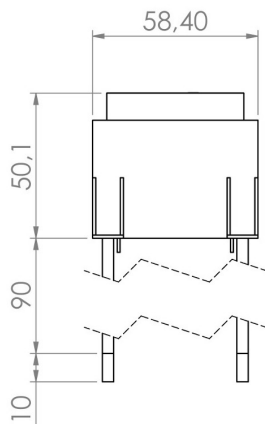
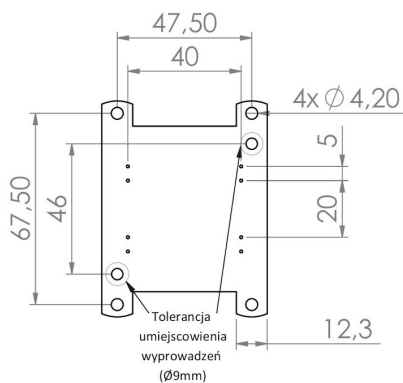
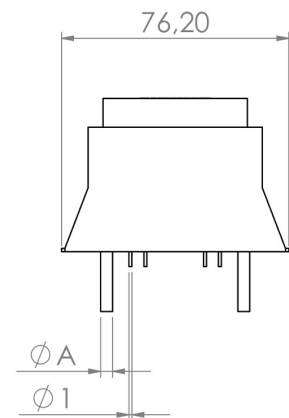
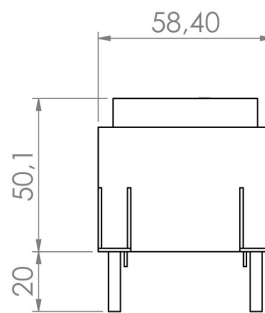
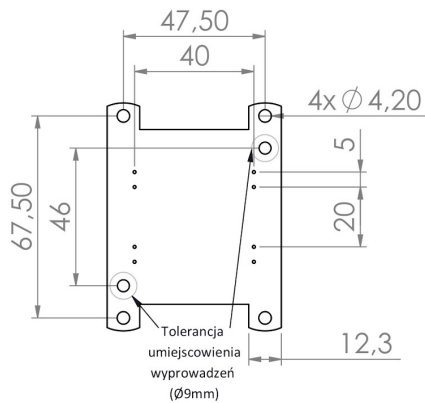
- power transformers (5kHz - 200kHz)
- interference suppression chokes (DC - 300kHz)
- energy storage chokes (DC - 300kHz)
- AC and DC filters
- flyback transformers
- PFC chokes
- EMI filters (DC - 1 MHz)
- soft and slow saturation at high current

ORDERING CODE:

DEMS- 55 / 1,00 / 10 - S

DEMS- _____ version: S- Standard, FL - Flying Leads
 55 _____ rated current in Amps
 / 1,00 _____ inductance in mH@ $I_{DC}=0A$
 / 10 _____ core size
 - S _____ product symbol

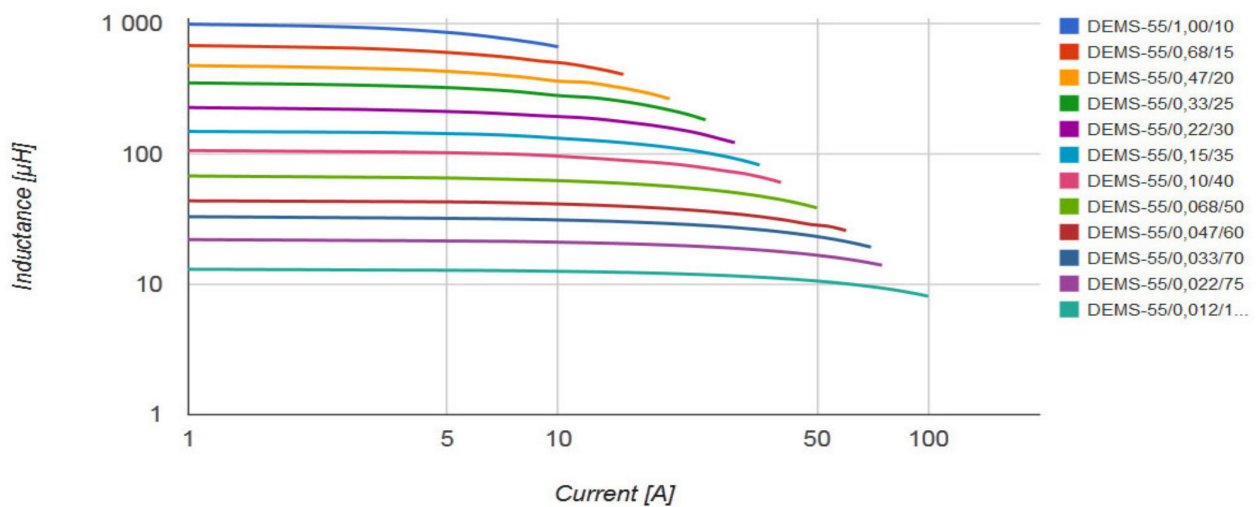
DIMENSIONS:



ELECTRICAL PROPERTIES:

Part number	L_{\max} [μH]	I_{\max} [A]	$L@I_{\max}$ [μH]	R_{DC} [Ω]	P_{CU} [W]	cross section [mm^2]	Δt [$^{\circ}\text{C}$]
DEMS-55/1,00/10	1000	10	685	0,136	13,6	0,9	80
DEMS-55/0,68/15	680	15	411	0,064	14,4	2,0	120
DEMS-55/0,47/20	470	20	267	0,050	20,0	2,0	100
DEMS-55/0,33/25	330	25	184	0,032	20,0	2,5	100
DEMS-55/0,22/30	220	30	123	0,021	18,9	3,0	85
DEMS-55/0,15/35	150	35	83	0,014	17,2	3,5	85
DEMS-55/0,10/40	100	40	61	0,011	17,6	4,0	80
DEMS-55/0,068/50	68	50	39	0,006	15,0	5,0	80
DEMS-55/0,047/60	47	60	44	0,004	14,4	6,0	90
DEMS-55/0,033/70	33	70	20	0,002	9,8	7,0	90
DEMS-55/0,022/75	22	75	14	0,003	16,9	7,5	95
DEMS-55/0,012/100	12	100	10	0,001	10,0	10,1	75

CHARACTERISTICS:



FOOTPRINTS AND WINDINGS CONNECTIONS (TOP VIEW):

