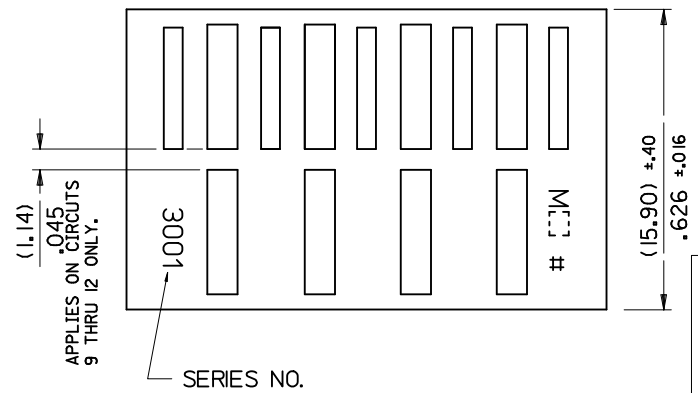
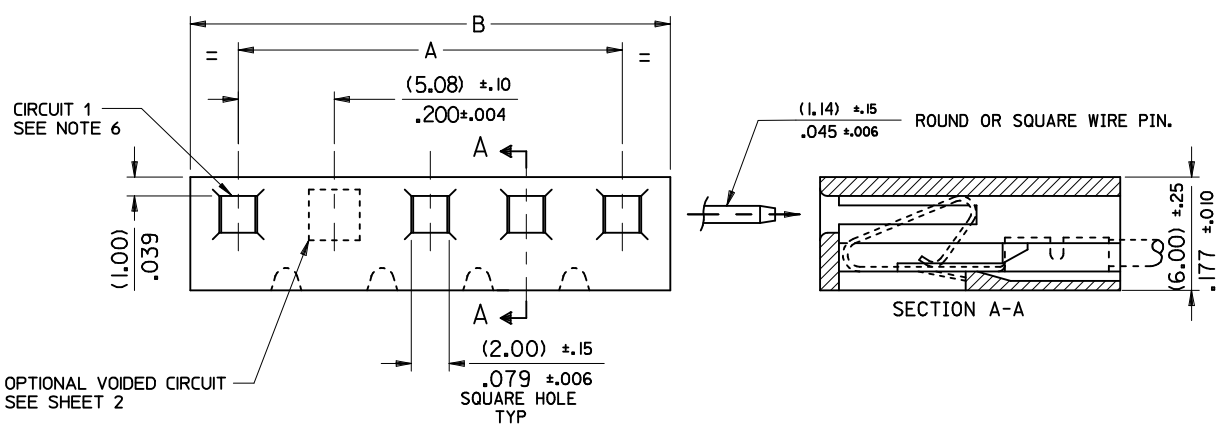


- NOTES:
1. MATERIAL: NYLON, UL94V-2, COLOR: NATURAL
 2. FINISH: N/A
 3. PRODUCT SPECIFICATION: PS-99020-0087
 4. THIS HOUSING USES KK TERMINAL SERIES 2478, 2578, AND 2878.
 5. THIS PART CONFORMS TO CLASS B REQUIREMENTS OF COSMETIC SPECIFICATION PS-45499-002.
 6. CIRCUIT 1 USED TO DEFINE VOID LOCATION



PART No.	ENG. No.	ENGLISH		METRIC	
		A	B	A	B
10-01-1124	E-3001-12	2.200 ±.010	2.400 ⁺⁰ _{-.012}	55.88 ±.25	60.96 ±.30
-1114	-11	2.000 ±.008	2.200 ⁺⁰ _{-.012}	50.80 ±.20	55.88 ±.30
-1104	-10	1.800 ±.008	2.000 ⁺⁰ _{-.008}	45.72 ±.20	50.80 ±.30
-1094	-9	1.600 ±.008	1.800 ⁺⁰ _{-.008}	40.64 ±.20	45.72 ±.30
-1084	-8	1.400 ±.008	1.600 ⁺⁰ _{-.008}	35.56 ±.20	40.64 ±.30
-1074	-7	1.200 ±.008	1.400 ⁺⁰ _{-.008}	30.48 ±.20	35.56 ±.30
-1064	-6	1.000 ±.004	1.200 ⁺⁰ _{-.008}	25.40 ±.10	30.48 ±.30
-1054	-5	.800 ±.004	1.000 ⁺⁰ _{-.008}	20.32 ±.10	25.40 ±.30
-1044	-4	.600 ±.004	.800 ⁺⁰ _{-.008}	15.24 ±.10	20.32 ±.30
-1034	-3	.400 ±.004	.600 ⁺⁰ _{-.008}	10.16 ±.10	15.24 ±.30
10-01-1024	E-3001-2	.200 ±.004	.400 ⁺⁰ _{-.008}	5.08 ±.10	10.16 ±.30

CORRECT 15.90 DIM. EC NO: UCP/2011-0476 DRWN:MK/PPER 2010/12/03 CHKD:JBELL APPR:FSM/TH 2010/12/06	QUALITY SYMBOLS ▽=0 ◻=0	GENERAL TOLERANCES (UNLESS SPECIFIED) <table border="1"> <tr> <th></th> <th>mm</th> <th>INCH</th> </tr> <tr> <td>4 PLACES</td> <td>± ---</td> <td>± ---</td> </tr> <tr> <td>3 PLACES</td> <td>± ---</td> <td>± .010</td> </tr> <tr> <td>2 PLACES</td> <td>± 0.25</td> <td>± .014</td> </tr> <tr> <td>1 PLACE</td> <td>± 0.35</td> <td>± ---</td> </tr> </table>		mm	INCH	4 PLACES	± ---	± ---	3 PLACES	± ---	± .010	2 PLACES	± 0.25	± .014	1 PLACE	± 0.35	± ---	DIMENSION STYLE MM/IN	SCALE 1:1	DESIGN UNITS METRIC	THIRD ANGLE PROJECTION
		mm	INCH																		
	4 PLACES	± ---	± ---																		
	3 PLACES	± ---	± .010																		
2 PLACES	± 0.25	± .014																			
1 PLACE	± 0.35	± ---																			
DRAFT WHERE APPLICABLE MUST REMAIN WITHIN DIMENSIONS	MATERIAL NO. SEE CHART	DRAWN BY P. MOORE	DATE 1998/09/15	TITLE KK (5.08)/.200 CRIMP TERMINAL HOUSING																	
APPROVED BY FSMITH 2010/12/06	CHECKED BY MGOONEY 1999/03/12	MOLEX INCORPORATED			SHEET NO. 1 OF 2																
SIZE A3	THIS DRAWING CONTAINS INFORMATION THAT IS PROPRIETARY TO MOLEX INCORPORATED AND SHOULD NOT BE USED WITHOUT WRITTEN PERMISSION																				

