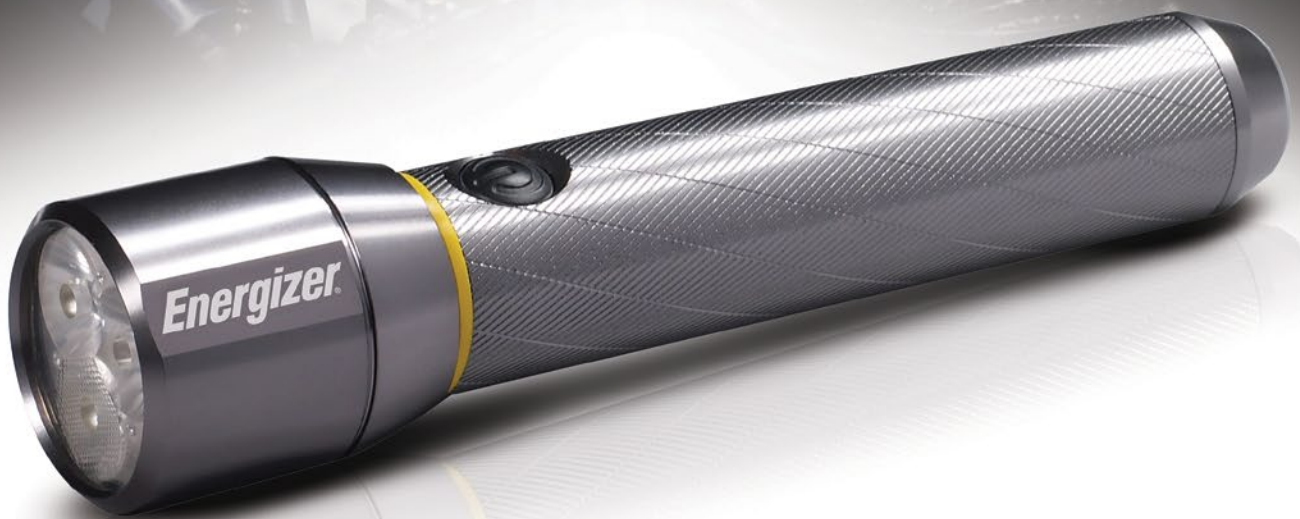


Energizer®

Work



PROFESSIONAL



**VISION HD
FOCUS**

METAL LED 6AA

The durable, high performance torch
for all your professional needs



Brightness



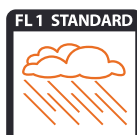
Runtime¹



Beam Distance



Impact Resistance



Weatherproof



METAL LED 6AA

The durable, high performance torch for all your professional needs

- Versatile, lightweight, high performance light providing exceptionally sharp, high-definition performance
- MAX-VIZ technology matches natural eye preferences to produce exceptional, high definition vision
- Digital Focus allows the user to smoothly transition from a sharp focused beam to a broad area beam
- Smooth digital switching allows users options of high, power-saver and emergency strobe modes
- Durable alloy construction provides confidence for any task
- 6 x AA Alkaline batteries included

SPECIFICATIONS	SAP/GMN	E300690600
	MODEL	PMZH61
	EAN	7638900419597
	ITF	17638900419594
	TORCH CU/SU	1/4
	DIMENSIONS CU (mm) (H,W,D)	317.4 x 133.3 x 79
	DIMENSIONS SU (mm) (H,W,D)	330 x 150.8 x 370.6
	WEIGHT (Kg) CU/SU	0.479/2.362
	SU DETAILS	EZ Tray
	BATTERIES	6 x AA
BULB	3 x White LED	



¹Based on a fresh set of Energizer MAX® AA batteries in high mode. ²Weatherproof to IPX4, not submersible.

FOR MORE INFORMATION ON ALL OUR LIGHTING PRODUCTS VISIT: www.energizer.eu