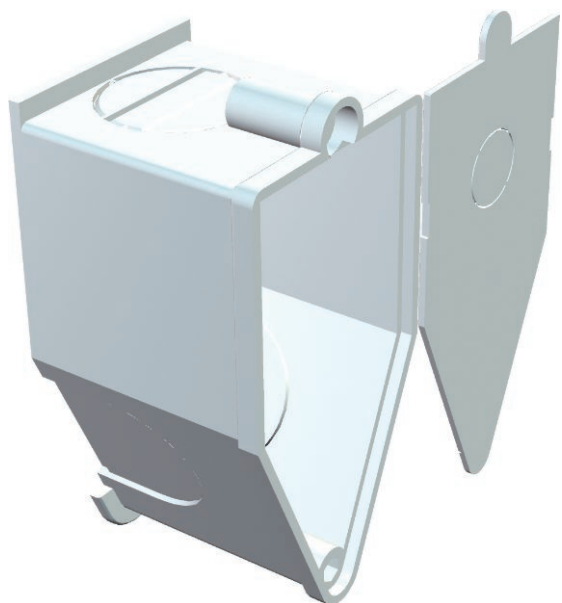


Technical data sheet

Wall light connection socket

Art.-Nr. 2003082



Wall luminaire connection socket with internal cover, space for 3 connection terminals, use according to VDE 0100, 3 break-out openings for cables and pipes \varnothing 18.7 mm, not to be used as a connection socket, protection rating IP20.



PS Polystyrene

Master data

Item no.	2003082
Type	UWA
Description 1	Wall light connection socket
Description 2	concealed
Dimension	60x30x32
Colour	Cream
RAL number	9001
Material	Polystyrene
Material symbol	PS
Smallest sales unit	25,00 Piece
Weight	0,89 kg/100 pc.

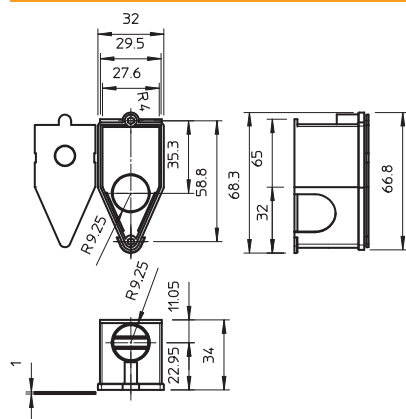
Technical data sheet

Wall light connection socket

Art.-Nr. 2003082



Technical data



Width	30,00 mm
Height	32,00 mm
Length	60,00 mm
Closable	<input type="checkbox"/>
No. of entries	3,00
Entries	3
Type of entry	break-out openings for cables and pipes Ø 18.7 mm
Type of housing penetration	Pre-marking
Version for	Single
Shape	Other
Equipment	Without
Cover	Not transparent
Cover fastening	Screwed
Entry from rear	<input checked="" type="checkbox"/>
Flame resistant	Flame resistant to VDE 0471/DIN 695 Part 2-1, test temperature 650 °C
Shape	Other
For pipe diameter	Other
Function maintenance (ETIM)	Without
Floor height	34 mm
Halogen-free	<input checked="" type="checkbox"/>
With screening	<input type="checkbox"/>
With nail strap	<input type="checkbox"/>
With bolts	<input type="checkbox"/>
Mounting type	Concealed
Nominal cross section	1,50 - 2,50 mm ²
Nominal voltage	400,00 V
Sealable	<input type="checkbox"/>
Impact-resistant	<input checked="" type="checkbox"/>
Protection rating	IP20
Support	Without
Wind-tight	<input type="checkbox"/>