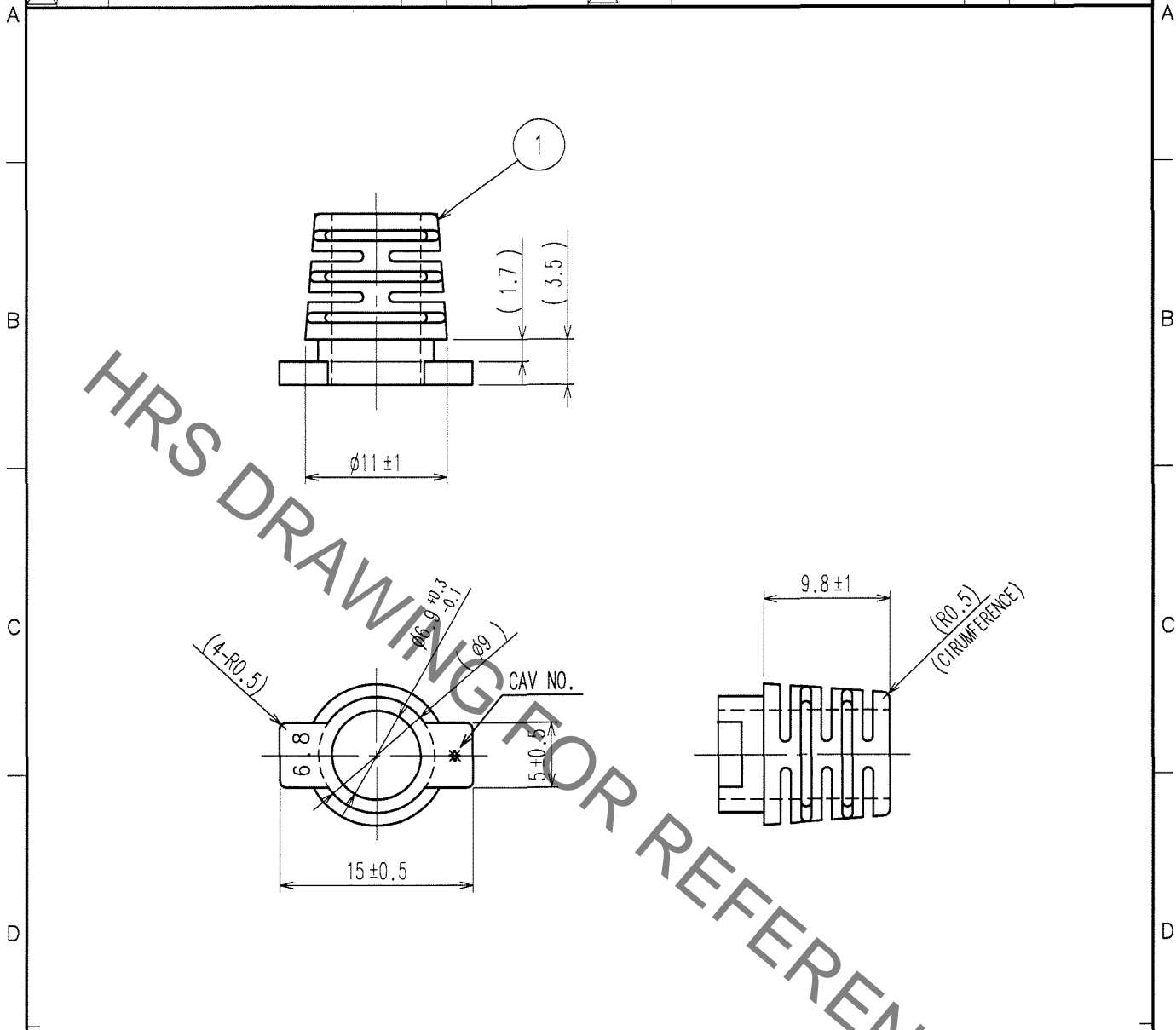


Mar.1.2020 Copyright 2020 HIROSE ELECTRIC CO., LTD. All Rights Reserved.
In case of consideration for using Automotive equipment / device which demand high reliability, kindly contact our sales window correspondents.

1		2			3			4		
COUNT	DESCRIPTION OF REVISIONS	BY	CHKD	DATE	COUNT	DESCRIPTION OF REVISIONS	BY	CHKD	DATE	
△					△					
△					△					
△					△					



NOTE 1. THIS IS THE BUSHING FOR FOLLOWING PRODUCT.

ST40X-36S-CV(80) CL241-0034-4-80

2. APPLICABLE WIRE OUTSIDE DIAMETER : ϕ 6.8

1	ELASTOMER	UL94HB COLOR:BLACK						
NO.	MATERIAL	FINISH, REMARKS	NO.	MATERIAL	FINISH, REMARKS			
CODE NO. (OLD)			DRAWN	DESIGNED	CHECKED	APPROVED	RELEASED	
			<i>K. Naganuma</i>	<i>K. Naganuma</i>	<i>M. Mizutani</i>	<i>[Signature]</i>		
			'07.01.24	'07.01.24	'07.01.25	'07.1.25		
DRAWING NO. EDC4-126207			PART NO. ST40X-BS1(6.8)					
SCALE 2 : 1			CODE NO. CL241-0064-5				1/1	
UNITS mm			HRS HIROSE ELECTRIC CO., LTD.					

TO